



Weekly Market Information

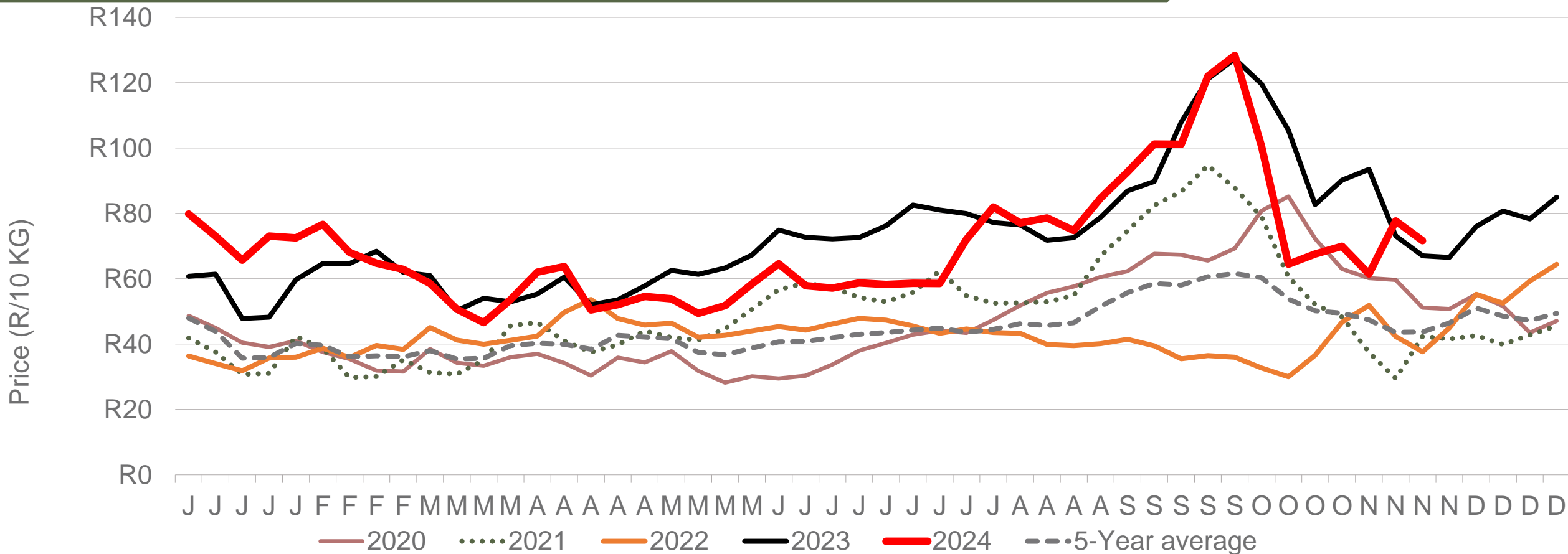
22 November 2024



**Potatoes
Aartappels SA**

www.potatoes.co.za

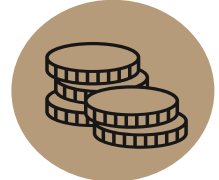
Average weekly price – all markets & all classes



Number of bags sold

40%

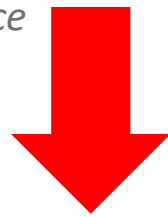
(Week on Week)



Average weekly price

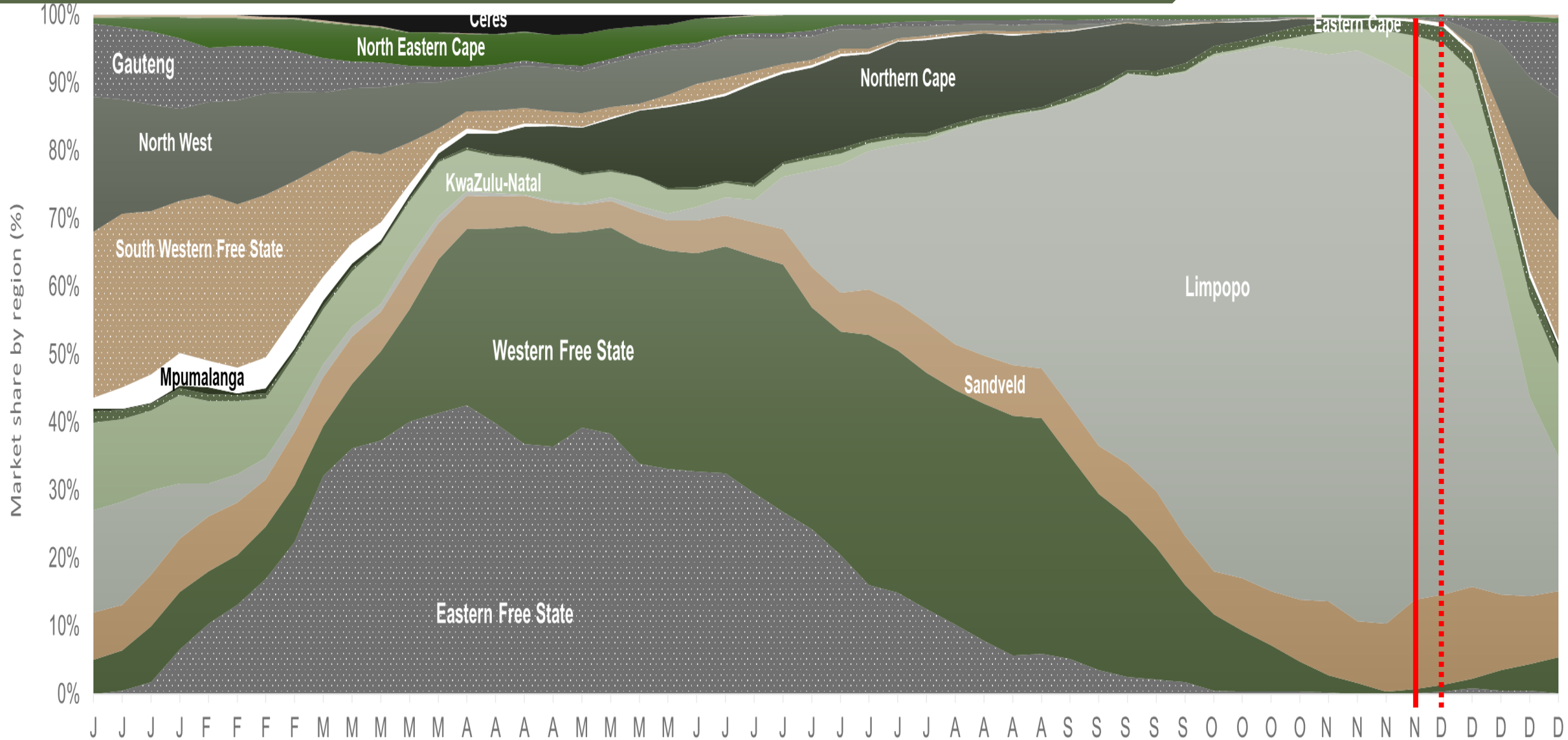
8%

(Week on week)



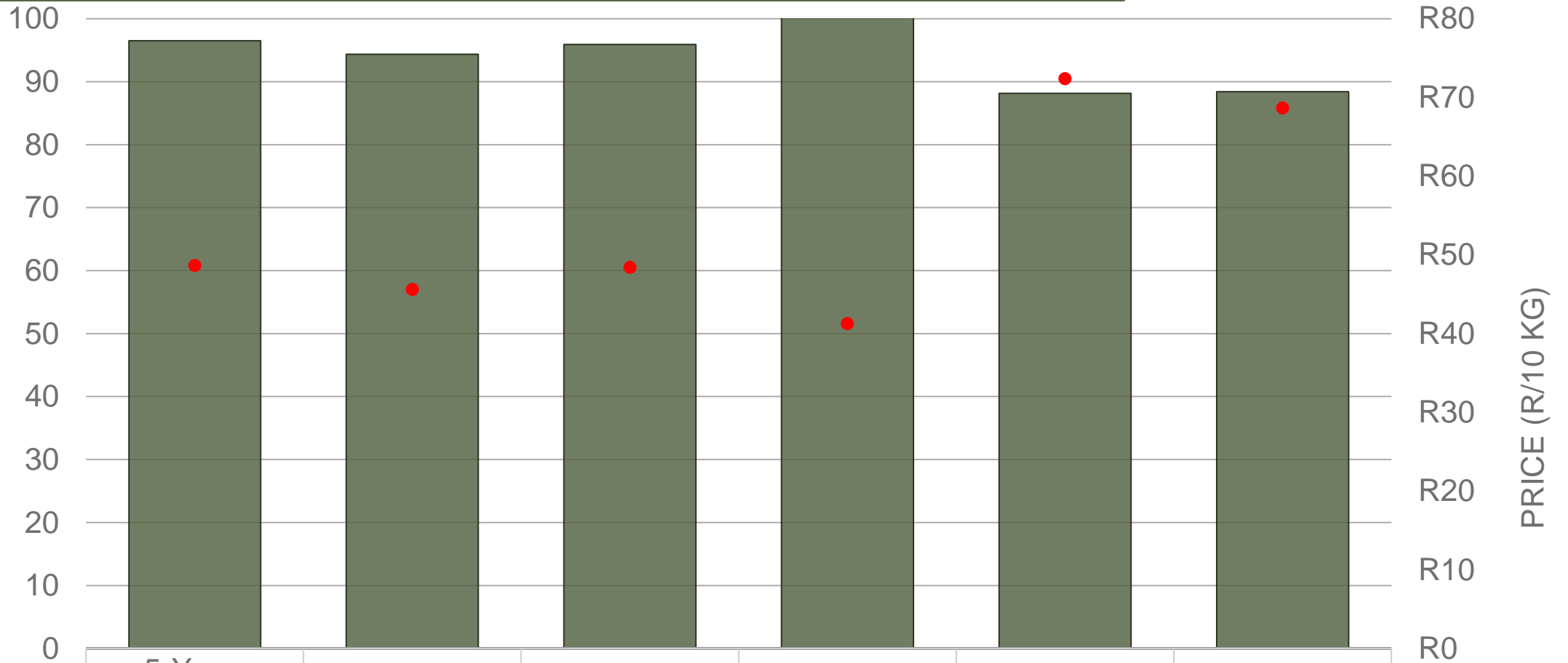
Data disclaimer: Potatoes SA does not take responsibility for the accuracy or interpretation of company data re-purposed by 3rd parties

Market share of regions on fresh produce markets



Data disclaimer: Potatoes SA does not take responsibility for the accuracy or interpretation of company data re-purposed by 3rd parties

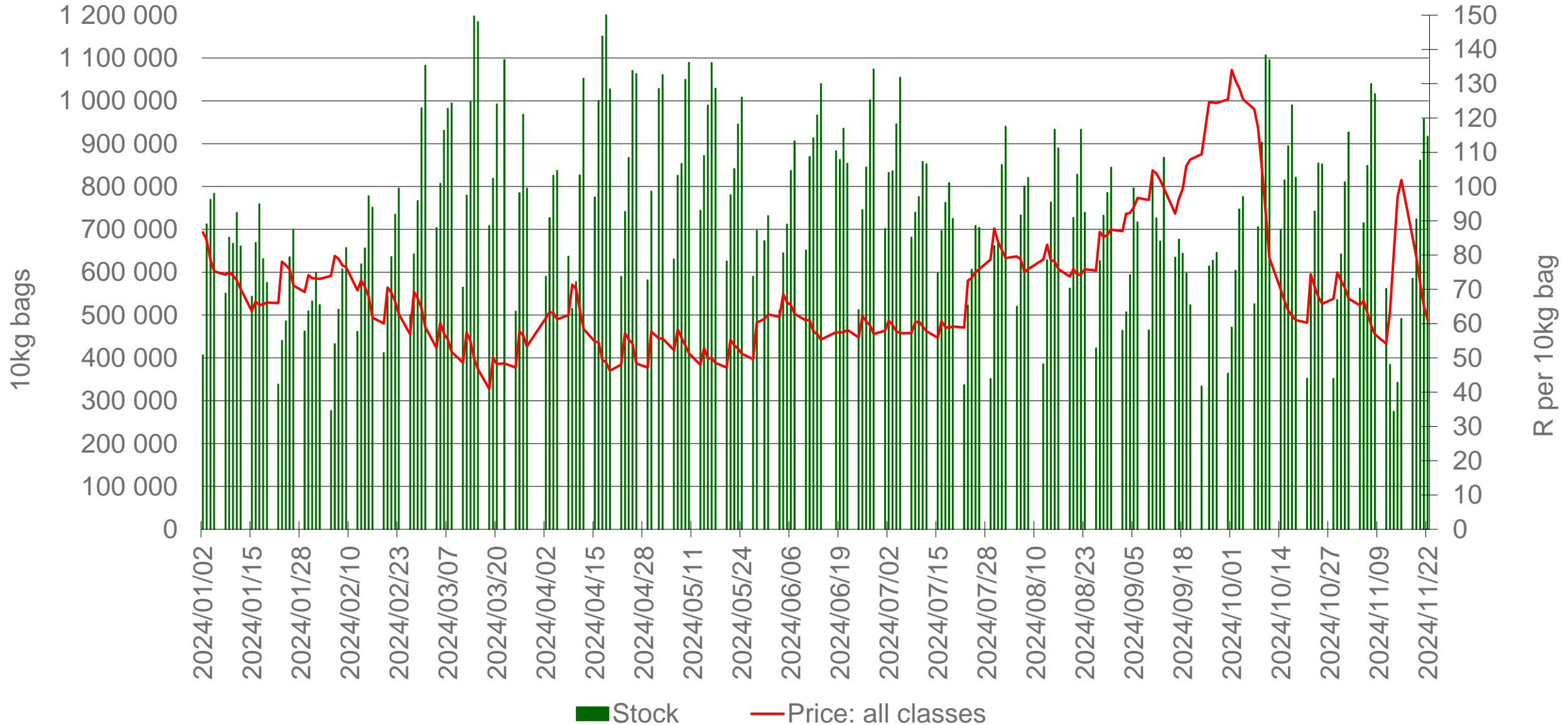
Cumulative total number of 10 kg bags sold on markets:



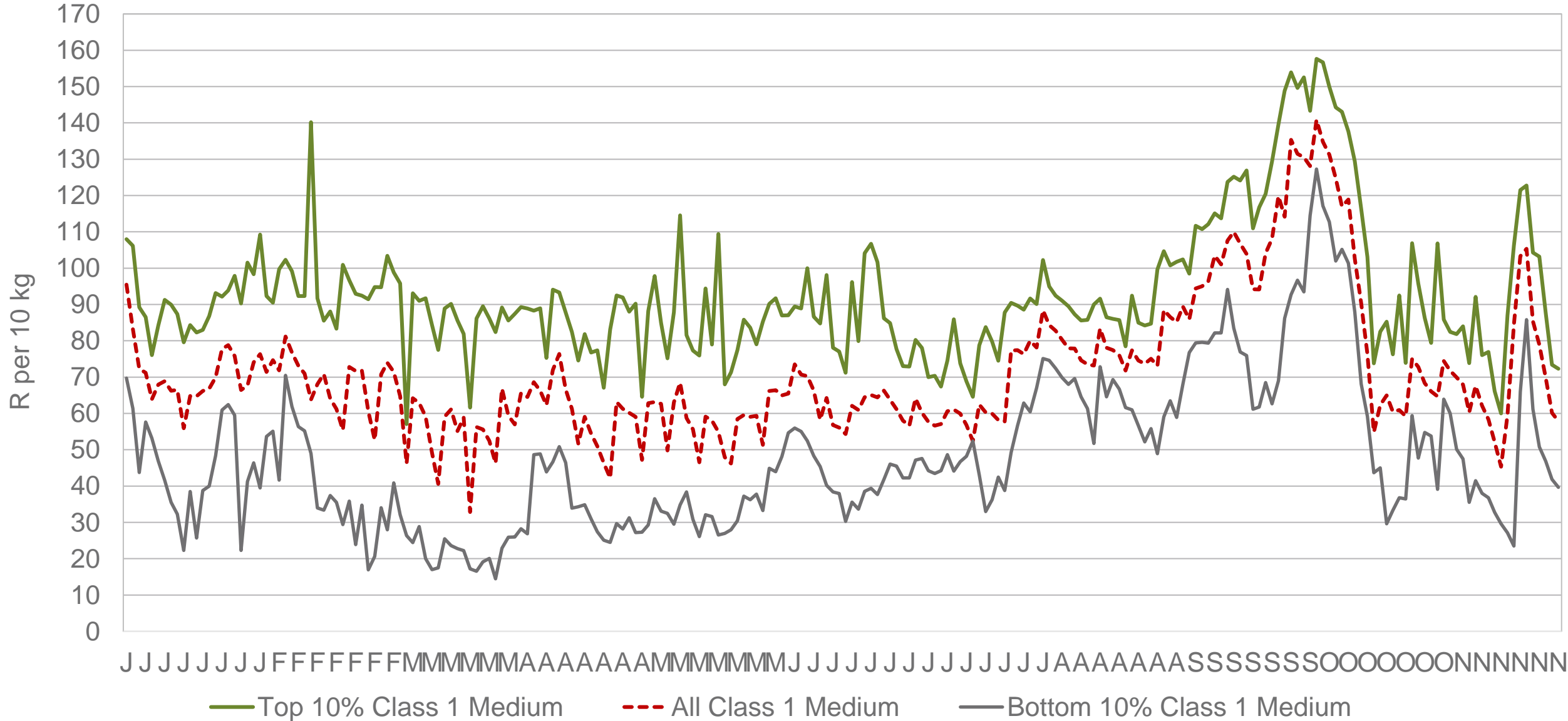
Sold 8 082 492 bags **less** than the **5-year average** (2019 to 2023) of the first 47 weeks of 2024

Data disclaimer: Potatoes SA does not take responsibility for the accuracy or interpretation of company data re-purposed by 3rd parties

RSA daily Price versus Daily Available stocks (all classes & all sizes)

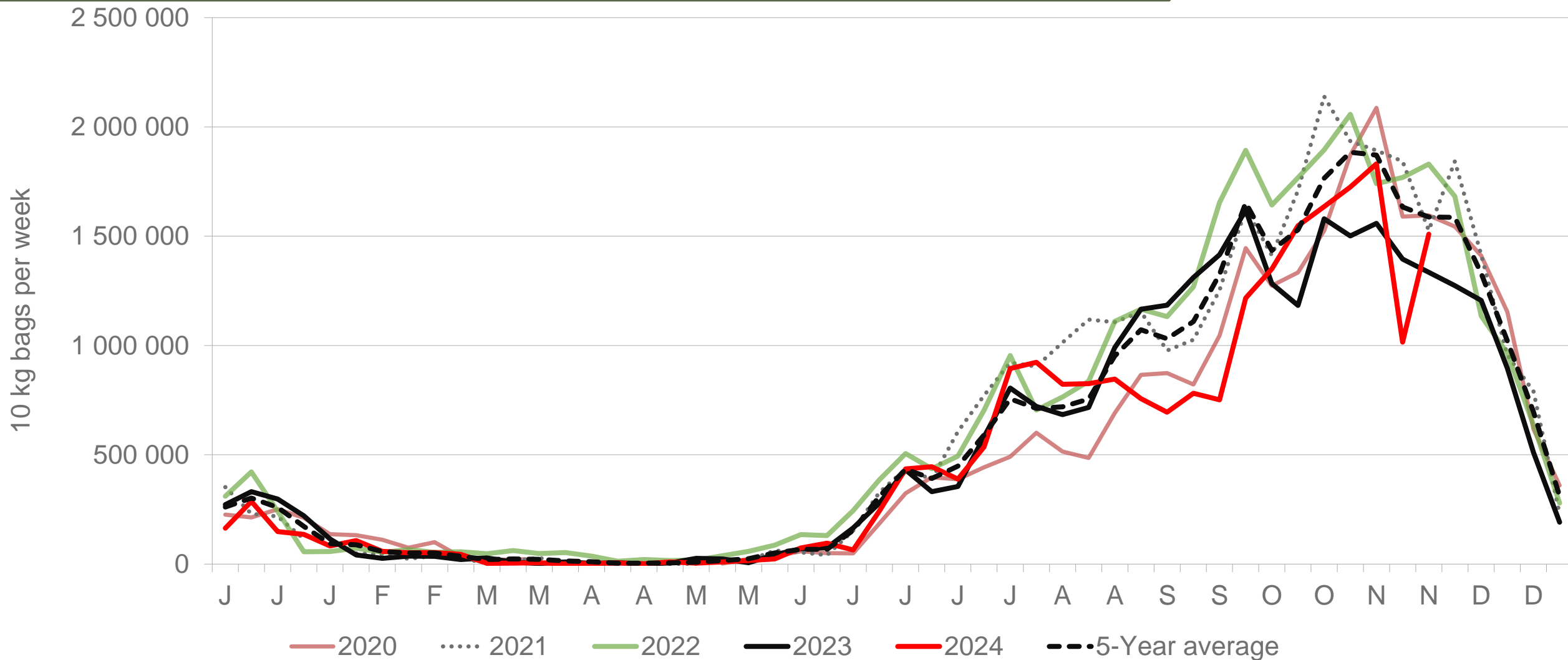


JHB market daily : Top 10% versus Bottom 10% prices – Class 1 Medium (Since January 2024)



Data disclaimer: Potatoes SA does not take responsibility for the accuracy or interpretation of company data re-purposed by 3rd parties

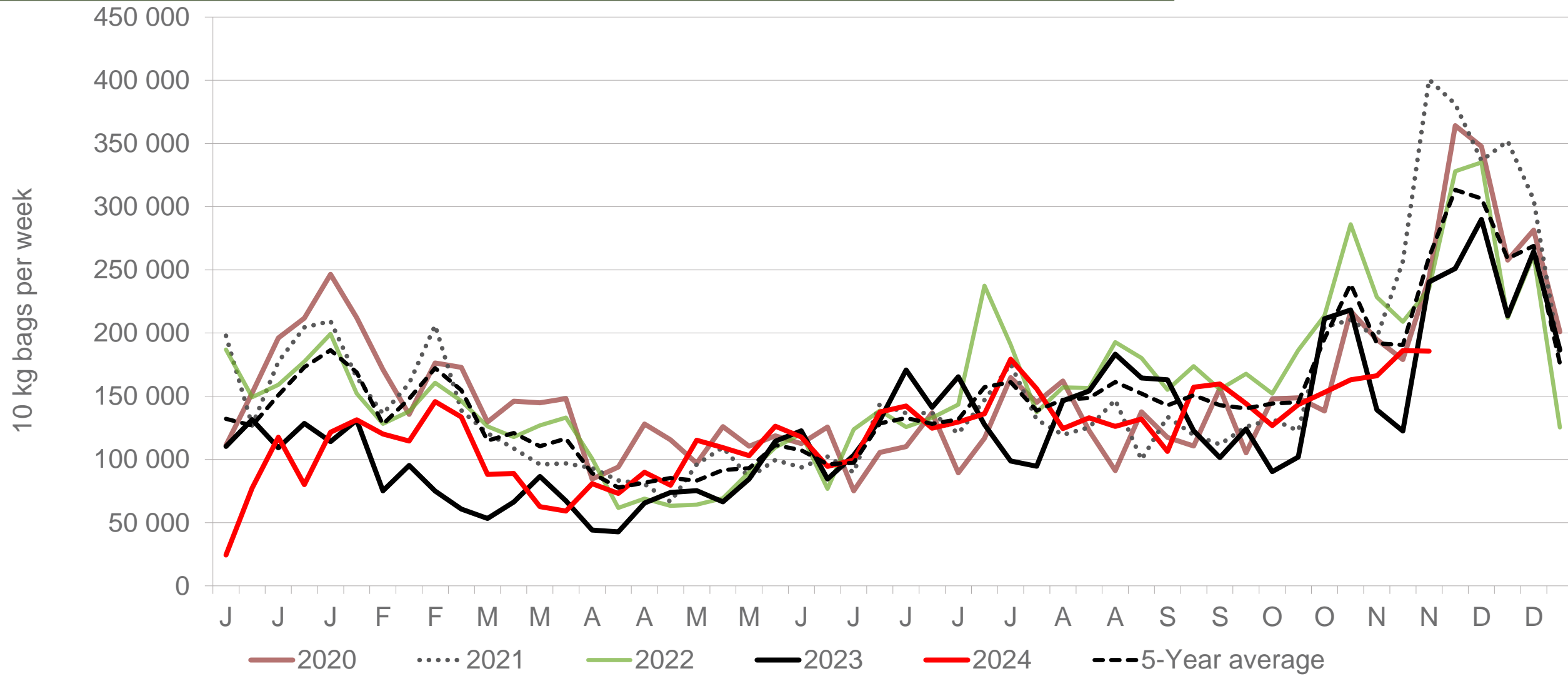
Limpopo: Amount of 10 kg bags per week sold on FPMs (all classes)



Sold 7% bags **less** than the first 47 weeks of 2023 and 3 196 046 bags **less** than the 5-year average (2019 to 2023) of the first 47 weeks of each year.

Data disclaimer: Potatoes SA does not take responsibility for the accuracy or interpretation of company data re-purposed by 3rd parties

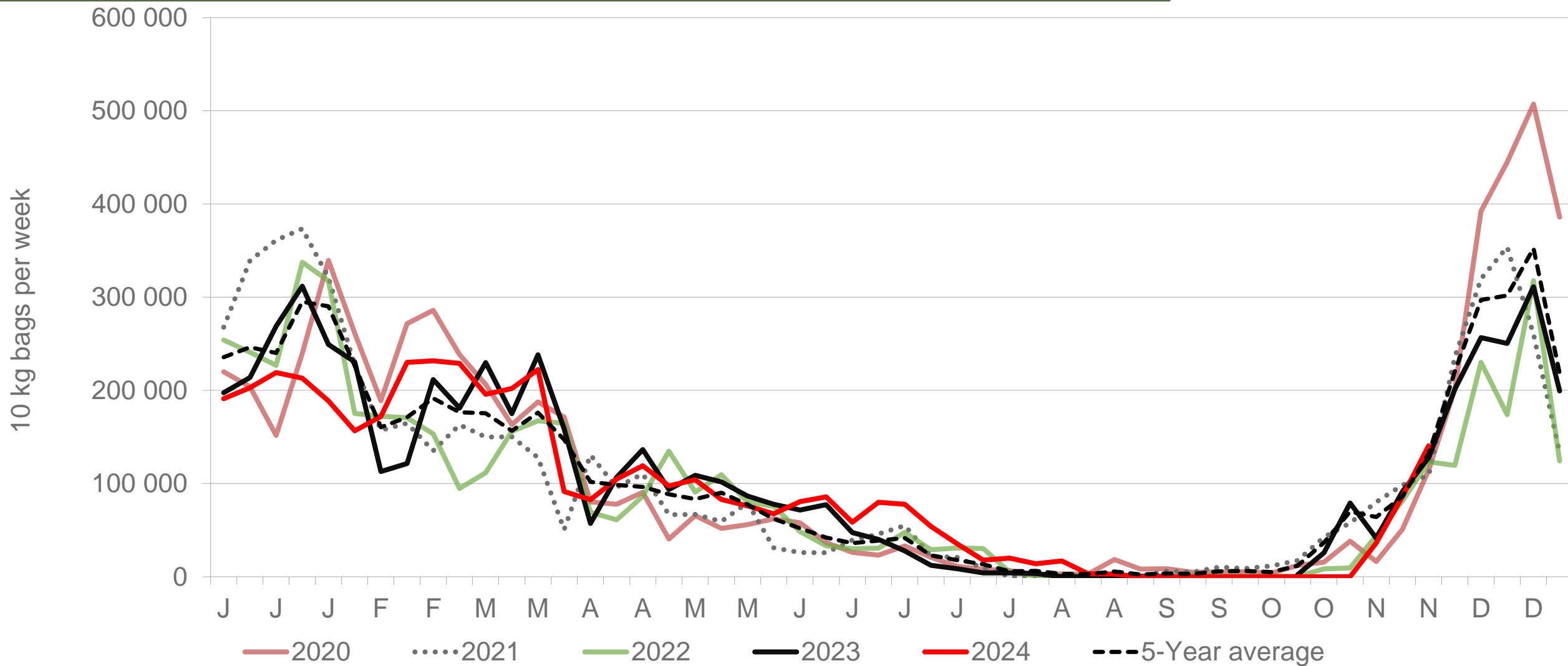
Sandveld: Amount of 10 kg bags per week sold on FPMs (all classes)



Sold 5% bags **more** than the first 47 weeks of 2023 and 881 392 bags **less** than the 5-year average (2019 to 2023) of the first 47 weeks of each year.

Data disclaimer: Potatoes SA does not take responsibility for the accuracy or interpretation of company data re-purposed by 3rd parties

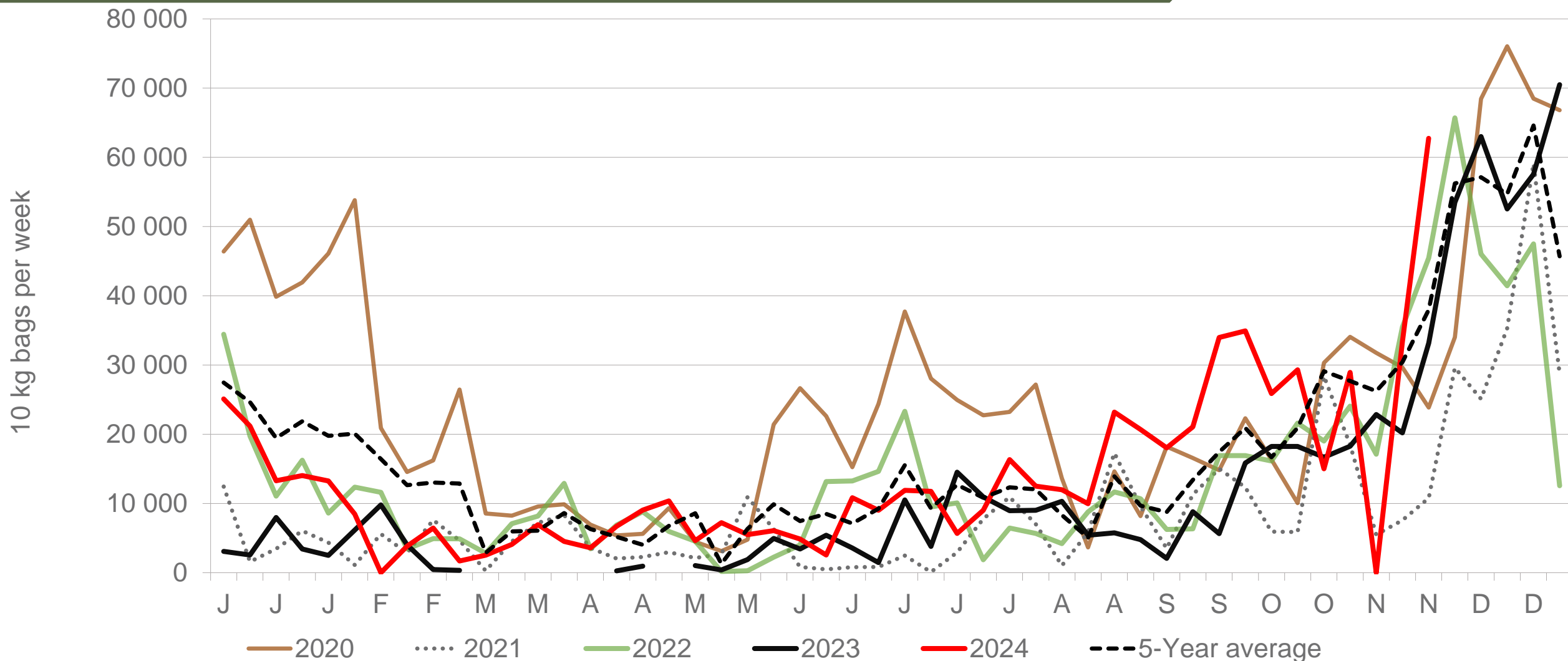
KwaZulu-Natal: Amount of 10 kg bags per week sold on FPMs (all classes)



Sold 1,03% bags less than the first 47 weeks of 2023 and 11 561 bags less than the 5-year average (2019 to 2023) of the first 47 weeks of each year.

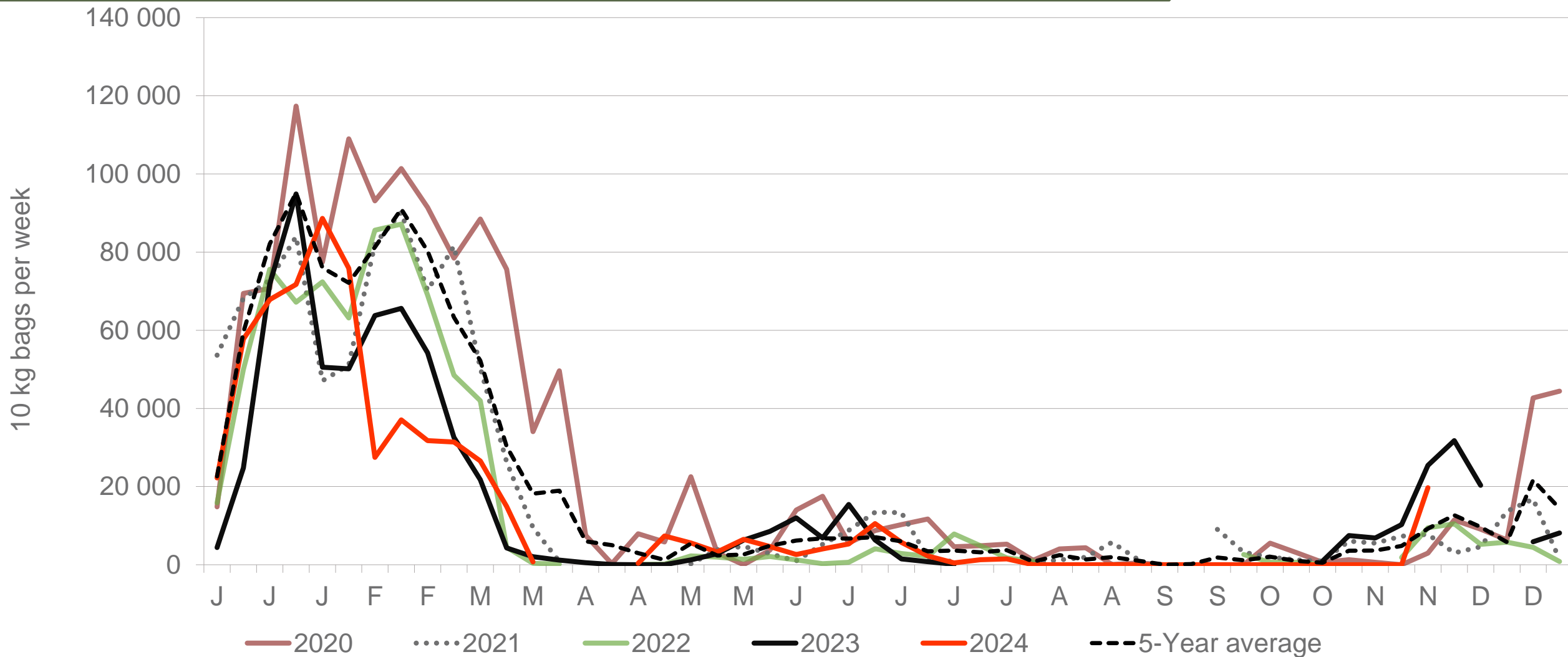
Data disclaimer: Potatoes SA does not take responsibility for the accuracy or interpretation of company data re-purposed by 3rd parties

Eastern Cape: Amount of 10 kg bags per week sold on FPMs (all classes)



Sold 96% bags **more** than the first 47 weeks of 2023 and 9 529 bags **less** than the 5-year average (2019 to 2023) of the 47 weeks of each year.

Mpumalanga: Amount of 10 kg bags per week sold on FPMs (all classes)



Sold 3% bags **less** than the first 47 weeks of 2023 and 320 655 bags **less** than the 5-year average (2019 to 2023) of the 47 weeks of each year.

Data disclaimer: Potatoes SA does not take responsibility for the accuracy or interpretation of company data re-purposed by 3rd parties

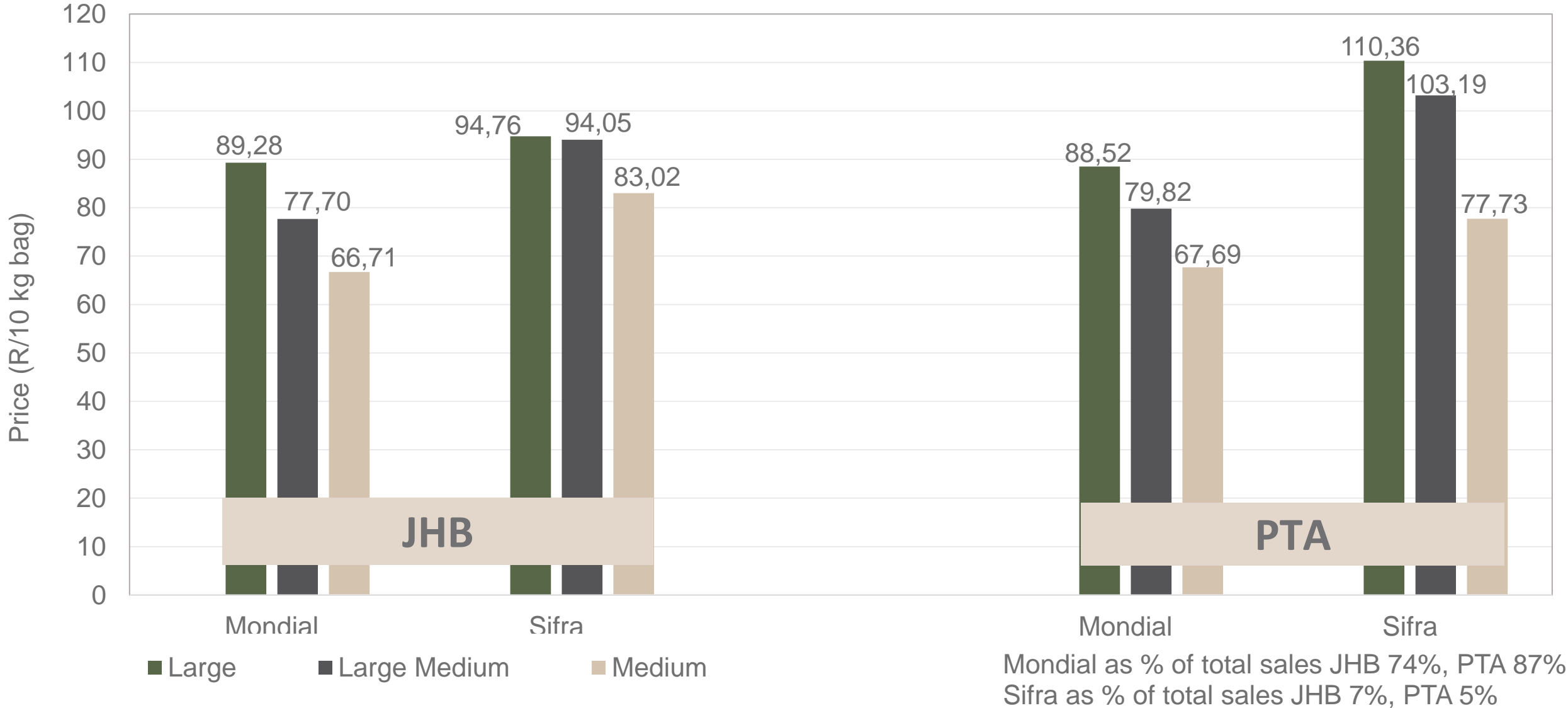
Average weekly prices and volumes for 10 kg bags of potatoes sold on selected markets from selected production regions



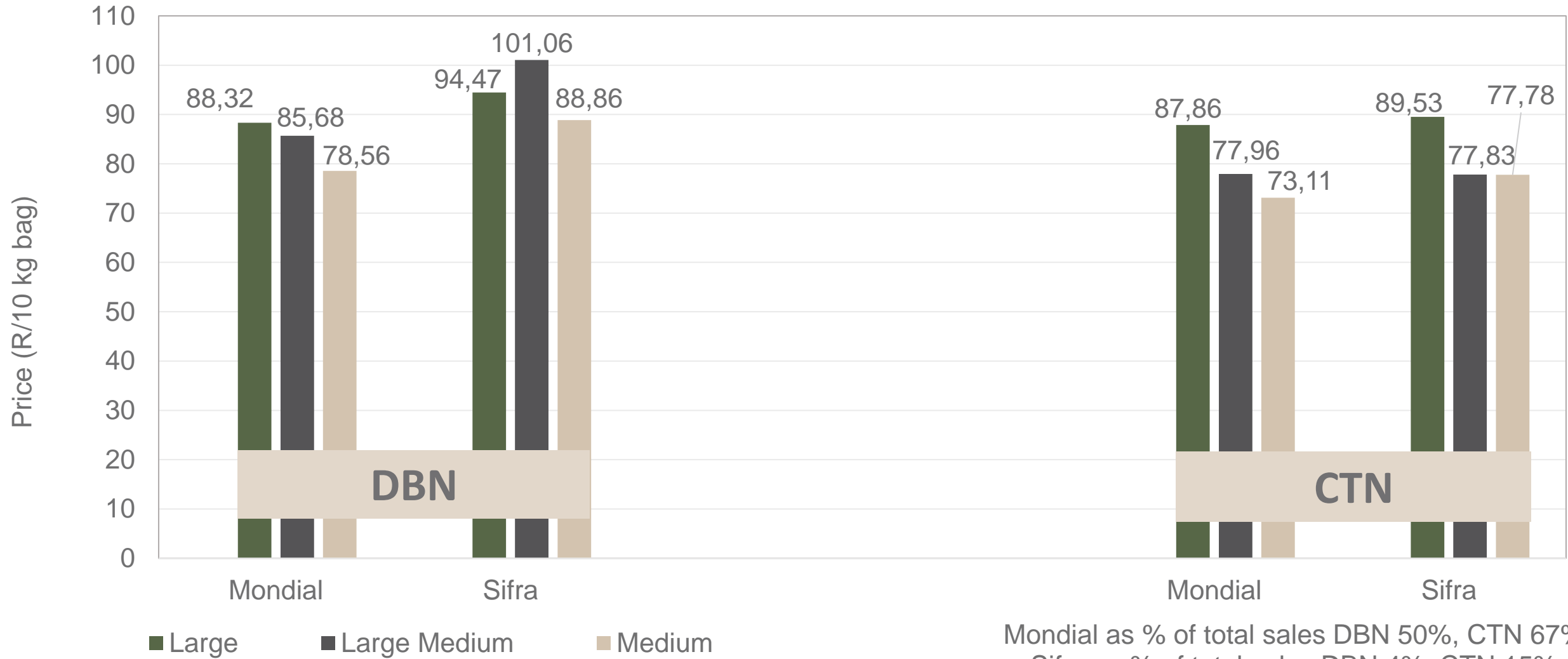
Klas & Grootte	Limpopo								Sandveld		KwaZulu-Natal				Eastern Cape				Mpumalanga				All Regions	
	JOH		PRE		DUR		KLE		CAP		DUR		PIE		POR		EAS		JOH		SPR		All Markets	
	Volume 10kg	Prices R/10kg	Volume 10kg	Prices R/10kg	Volume 10kg	Prices R/10kg	Volume 10kg	Prices R/10kg	Volume 10kg	Prices R/10kg	Volume 10kg	Prices R/10kg	Volume 10kg	Prices R/10kg	Volume 10kg	Prices R/10kg	Volume 10kg	Prices R/10kg	Volume 10kg	Prices R/10kg	Volume 10kg	Prices R/10kg	Volume 10kg	Prices R/10kg
1L	162 368	85,63	76 512	89,60	12 490	86,41	8 924	94,05	12 895	84,02	17 059	84,98	4 496	83,92	5 180	86,40	2 089	103,55	10 448	85,15	2 202	90,93	386 108	87,39
1L/M	234 237	76,39	92 851	80,25	16 638	84,02	10 860	77,63	30 890	75,05	28 768	79,30	6 798	77,56	6 095	79,20	2 698	95,65	307	91,76	300	81,47	511 897	78,18
1M	199 957	66,92	73 425	68,57	19 679	76,96	9 355	72,38	32 655	75,27	36 524	75,52	3 810	73,89	9 501	72,06	1 905	94,95	2	60,00	-	-	446 006	70,00
1S	53 065	45,00	15 303	48,88	7 384	64,78	5 452	48,50	14 028	61,85	11 169	44,63	2 858	49,59	3 442	55,67	905	87,50	379	31,98	68	76,00	133 380	49,74
1S/M	67 086	52,89	18 114	57,33	6 385	71,28	3 563	58,97	2 435	65,27	3 451	78,02	944	78,11	-	-	401	89,60	406	85,00	659	74,98	119 503	57,48
1XL	1 221	111,71	-	-	-	-	-	-	-	-	-	-	-	-	-	-	-	-	-	-	-	-	1 221	111,71
1XS	25 069	37,84	-	-	-	-	-	-	-	-	-	-	-	-	-	-	-	-	170	17,35	-	-	25 458	37,72
1XXS	-	-	-	-	-	-	-	-	-	-	-	-	-	-	-	-	-	-	-	-	-	-	-	-
2L	16 595	73,48	13 253	79,21	2 750	78,22	2 114	93,90	10 053	68,31	740	79,11	1 387	81,08	1 138	70,45	407	97,05	-	-	-	-	65 627	76,98
2L/M	19 486	63,47	16 897	75,97	1 460	76,71	3 238	74,32	21 765	68,81	696	59,69	966	63,18	639	66,18	728	86,33	194	67,37	85	97,65	81 710	71,90
2M	16 276	50,43	17 936	67,05	3 074	45,40	1 366	61,28	22 127	61,15	1 333	61,35	1 131	71,48	4 272	47,74	986	83,69	-	-	-	-	83 481	59,73
2S	1 902	28,81	1 991	35,25	1 108	40,70	1 298	43,69	6 758	48,53	-	-	319	44,51	1 758	33,84	210	68,40	-	-	-	-	19 231	40,66
2S/M	2 814	47,98	2 677	47,55	330	67,82	414	45,52	831	34,93	-	-	-	-	-	-	-	-	-	-	-	-	10 002	47,61
2XL	198	83,33	-	-	-	-	-	-	-	-	-	-	-	-	-	-	-	-	-	-	-	-	198	83,33
2XS	192	25,00	-	-	-	-	-	-	-	-	-	-	-	-	-	-	-	-	-	-	-	-	839	20,71
2XXS	-	-	-	-	-	-	-	-	-	-	-	-	-	-	-	-	-	-	-	-	-	-	-	-
3L	2 160	49,76	1 902	55,28	-	-	918	83,37	952	81,09	161	95,16	205	63,66	-	-	-	-	-	-	-	-	7 976	62,91
3L/M	1 687	51,33	1 563	58,57	-	-	540	45,06	17	68,18	-	-	210	30,00	-	-	-	-	-	-	-	-	4 467	52,52
3M	7 253	43,58	3 774	53,54	305	65,43	202	54,50	1 156	54,61	1 077	52,09	1 345	56,26	1 574	43,44	1 986	58,81	-	-	-	-	23 948	50,94
3S/M	660	33,33	351	20,00	-	-	-	-	47	69,96	-	-	-	-	-	-	-	-	-	-	-	-	1 058	30,54
3XS	-	-	-	-	-	-	-	-	-	-	-	-	-	-	-	-	-	-	-	-	-	-	100	24,30
3XXS	-	-	-	-	-	-	-	-	-	-	-	-	-	-	-	-	-	-	-	-	-	-	-	-
4L	-	-	632	73,96	-	-	-	-	-	-	-	-	-	-	-	-	-	-	-	-	-	-	742	70,40
4L/M	-	-	974	77,16	-	-	-	-	345	53,96	-	-	-	-	-	-	-	-	-	-	-	-	1 429	67,97
4M	-	-	1 737	37,98	-	-	597	34,82	70	40,00	210	62,79	-	-	257	28,07	-	-	-	-	-	-	3 054	39,48
4S	-	-	-	-	-	-	-	-	-	-	-	-	-	-	-	-	-	-	-	-	-	-	-	-
4S/M	-	-	46	33,46	-	-	-	-	-	-	-	-	-	-	-	-	-	-	-	-	-	-	46	33,46
Total	812 336	69,21	349 016	73,85	73 628	75,37	49 220	72,66	165 125	68,30	102 507	73,91	24 828	71,68	34 658	66,27	12 875	86,50	11 906	82,36	3 314	86,77	1 958 656	71,63

Data disclaimer: Potatoes SA does not take responsibility for the accuracy or interpretation of company data re-purposed by 3rd parties

PTA & JHB markets: Average Prices - Different Sizes (only 10 kg bags)

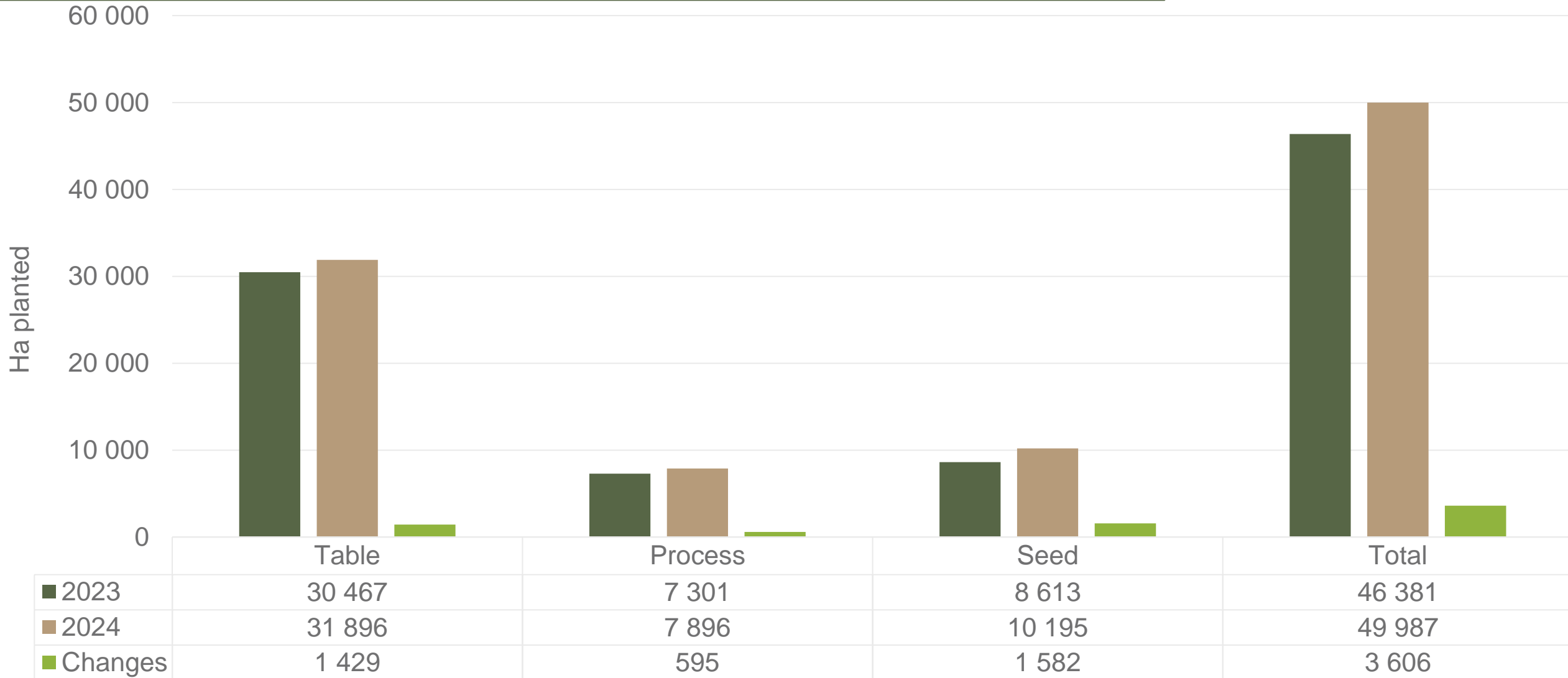


DBN & CTN markets: Average Prices - Different Sizes (only 10 kg bags)



Mondial as % of total sales DBN 50%, CTN 67%
 Sifra as % of total sales DBN 4%, CTN 15%

Hectares planted to date for season 2023 versus 2024



Regions finished: Limpopo early and main, Gauteng late, North west main and late, Eastern Free State main, Western Free State early and late, Southwestern Free State main, Ceres main, Eastern Cape winter and summer, North Eastern Cape main, Northern cape early and main, KwaZulu Natal summer and winter, Marble hall main, Sandveld summer and early winter

Data disclaimer: Potatoes SA does not take responsibility for the accuracy or interpretation of company data re-purposed by 3rd parties

Thank you for your time

Feel free to contact us



Dikgetho@potatoes.co.za

Billy@potatoes.co.za

Jodie@potatoes.co.za



+27 (0)12 349 1906



6 De Havilland Crescent
Persequor Techno Park
Persequor Park
Pretoria



www.potatoes.co.za



Potatoes
Aartappels SA