



Weekly Market Information

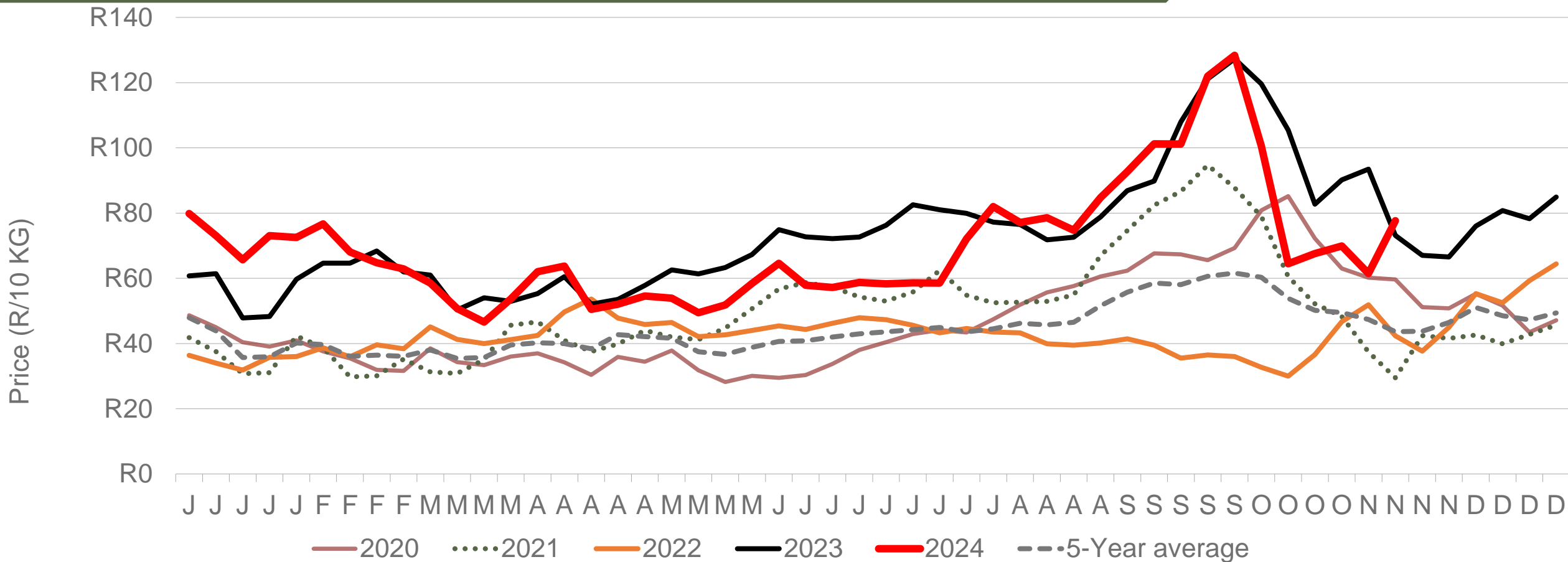
15 November 2024



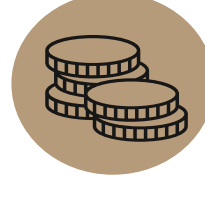
**Potatoes
Aartappels SA**

www.potatoes.co.za

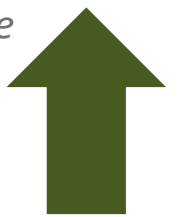
Average weekly price – all markets & all classes




Number of bags sold
34%
 (Week on Week)

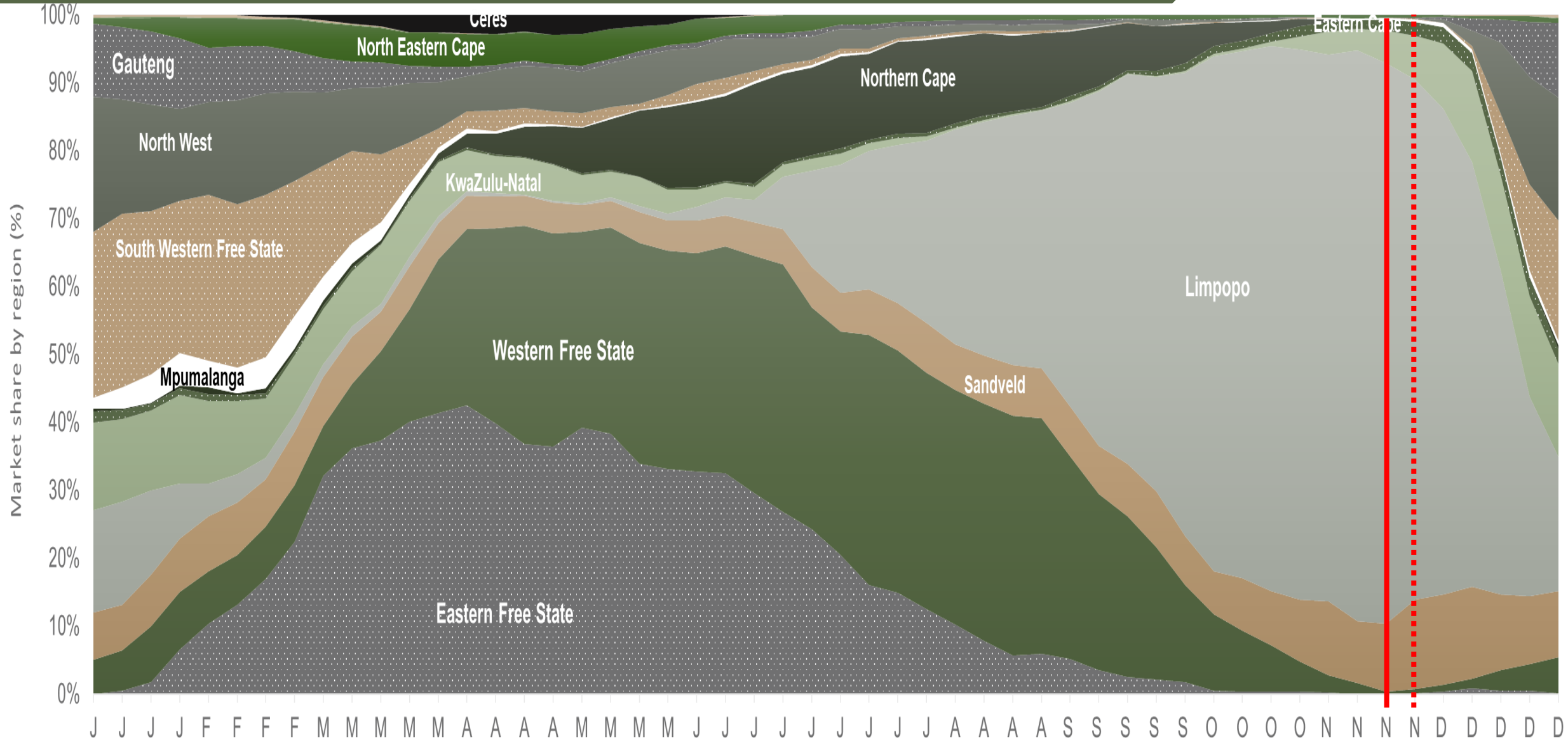



Average weekly price
26%
 (Week on week)



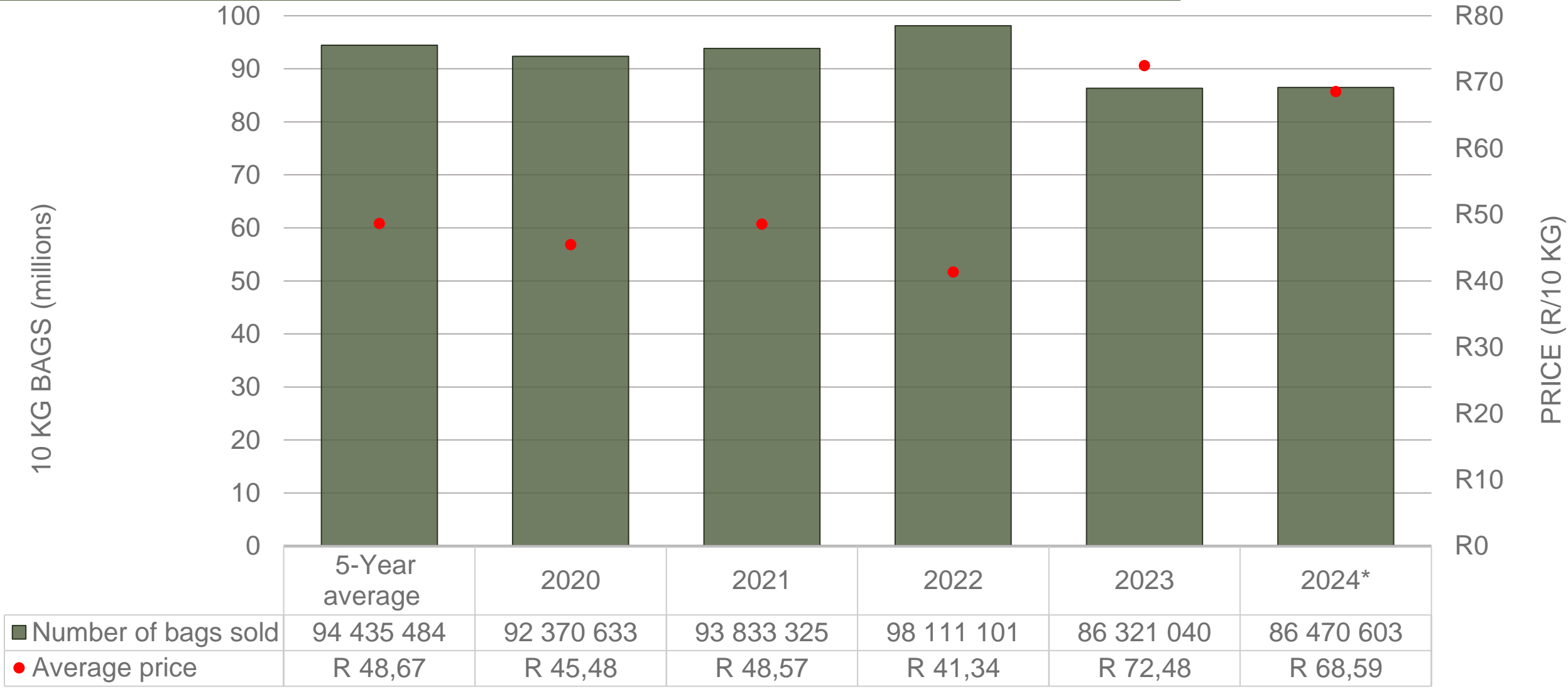
Data disclaimer: Potatoes SA does not take responsibility for the accuracy or interpretation of company data re-purposed by 3rd parties

Market share of regions on fresh produce markets



Data disclaimer: Potatoes SA does not take responsibility for the accuracy or interpretation of company data re-purposed by 3rd parties

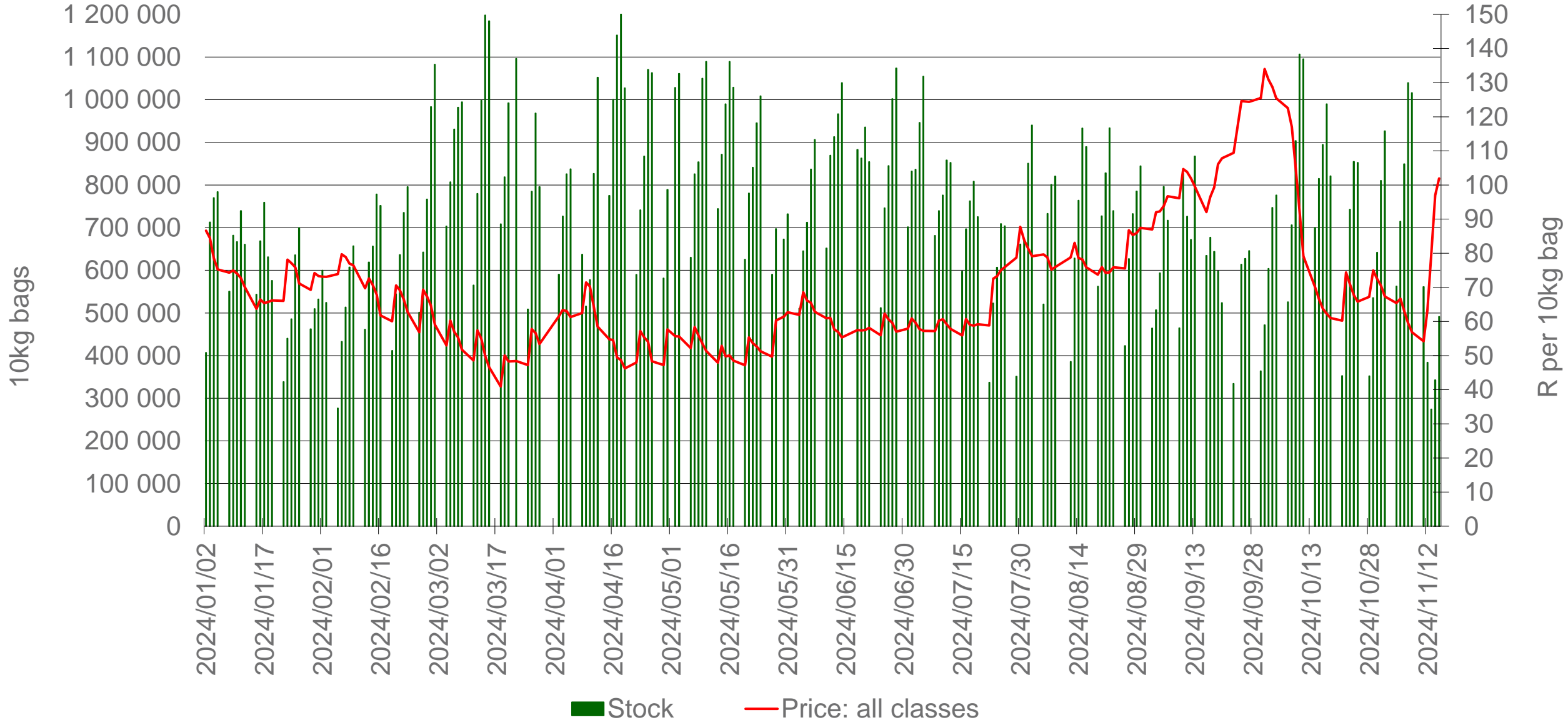
Cumulative total number of 10 kg bags sold on markets:



Sold 7 964 881 bags **less** than the **5-year average** (2019 to 2023) of the first 46 weeks of 2024

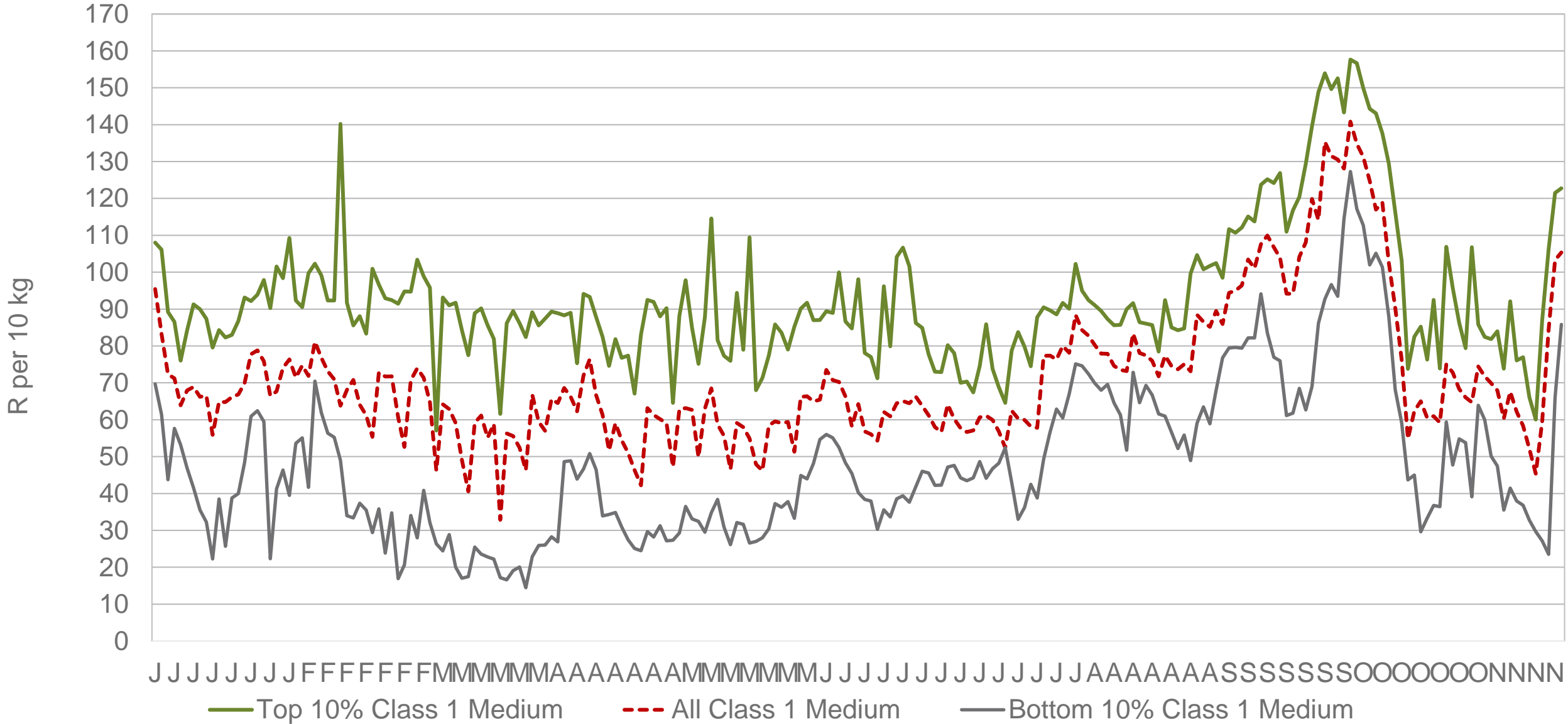
Data disclaimer: Potatoes SA does not take responsibility for the accuracy or interpretation of company data re-purposed by 3rd parties

RSA daily Price versus Daily Available stocks (all classes & all sizes)



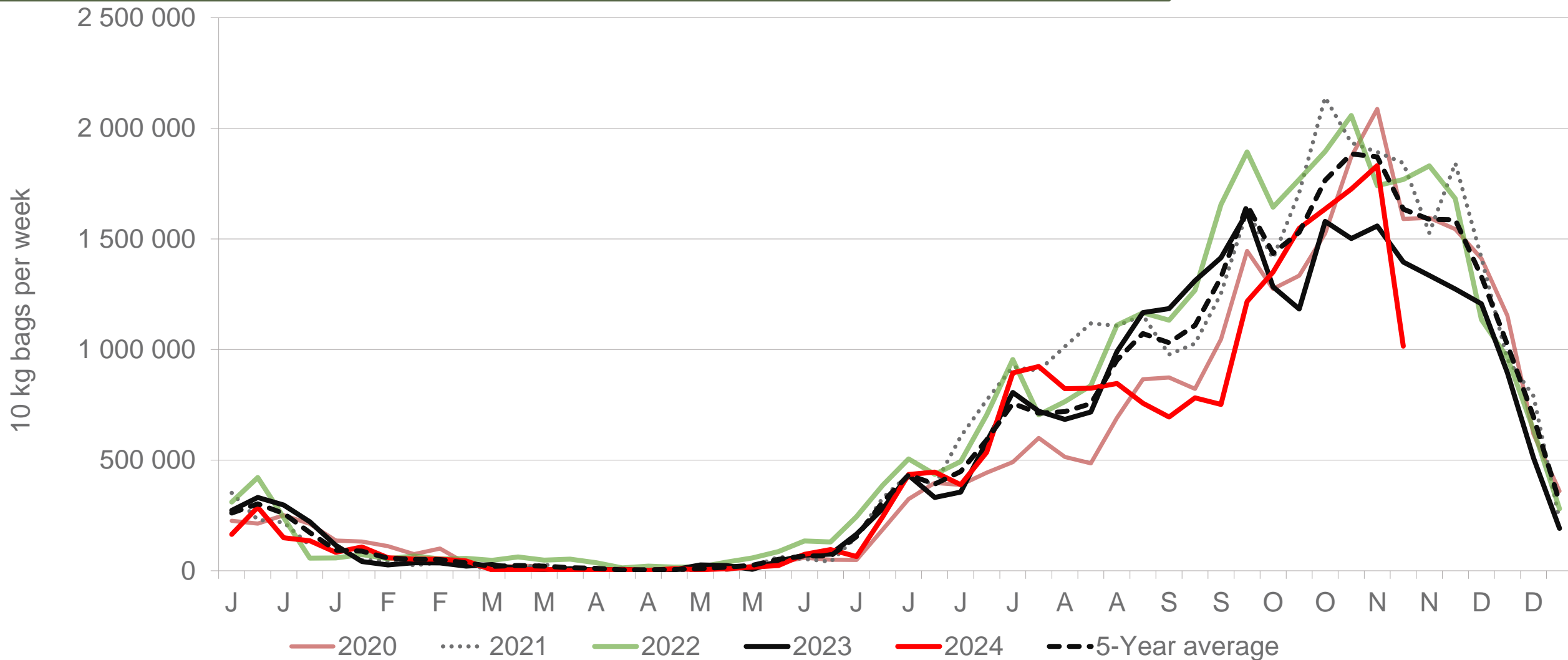
Data disclaimer: Potatoes SA does not take responsibility for the accuracy or interpretation of company data re-purposed by 3rd parties

JHB market daily : Top 10% versus Bottom 10% prices – Class 1 Medium (Since January 2024)



Data disclaimer: Potatoes SA does not take responsibility for the accuracy or interpretation of company data re-purposed by 3rd parties

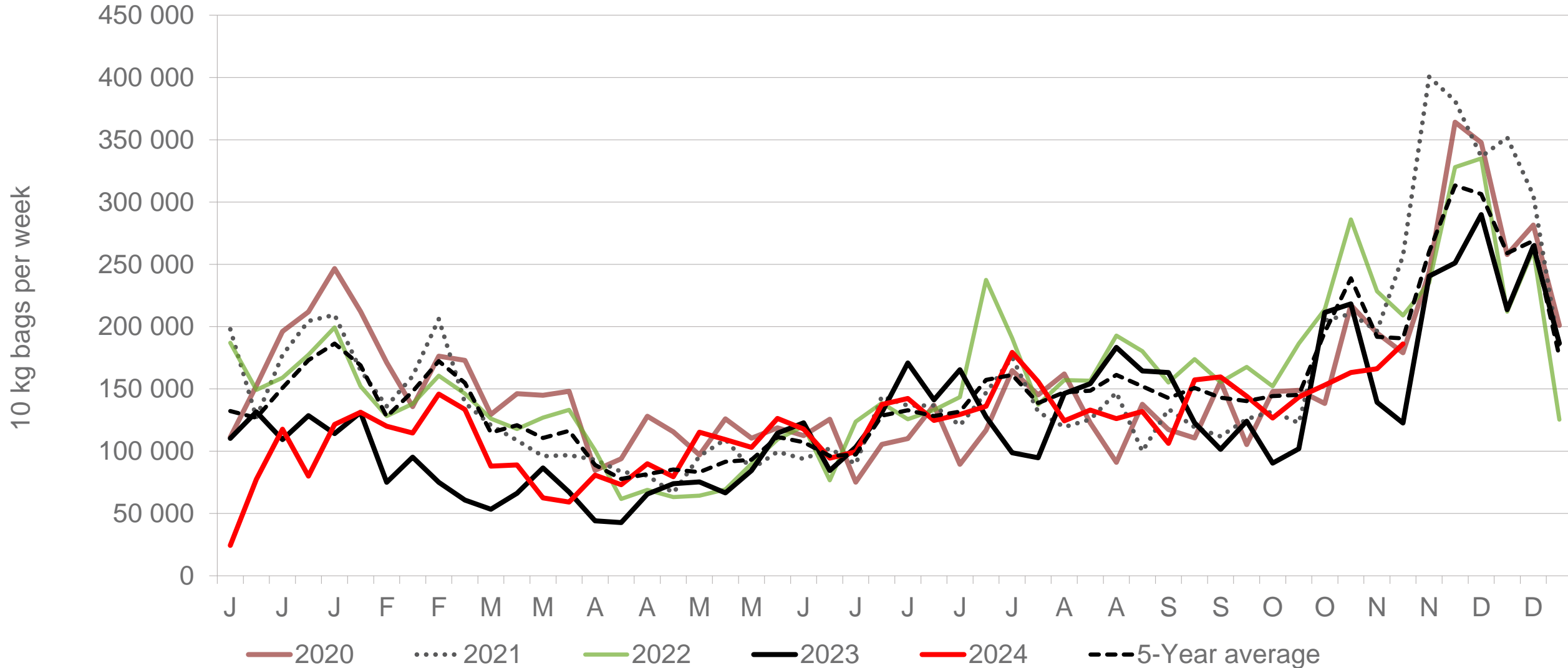
Limpopo: Amount of 10 kg bags per week sold on FPMs (all classes)



Sold 8% bags **less** than the first 46 weeks of 2023 and 3 117 335 bags **less** than the 5-year average (2019 to 2023) of the first 46 week of each year.

Data disclaimer: Potatoes SA does not take responsibility for the accuracy or interpretation of company data re-purposed by 3rd parties

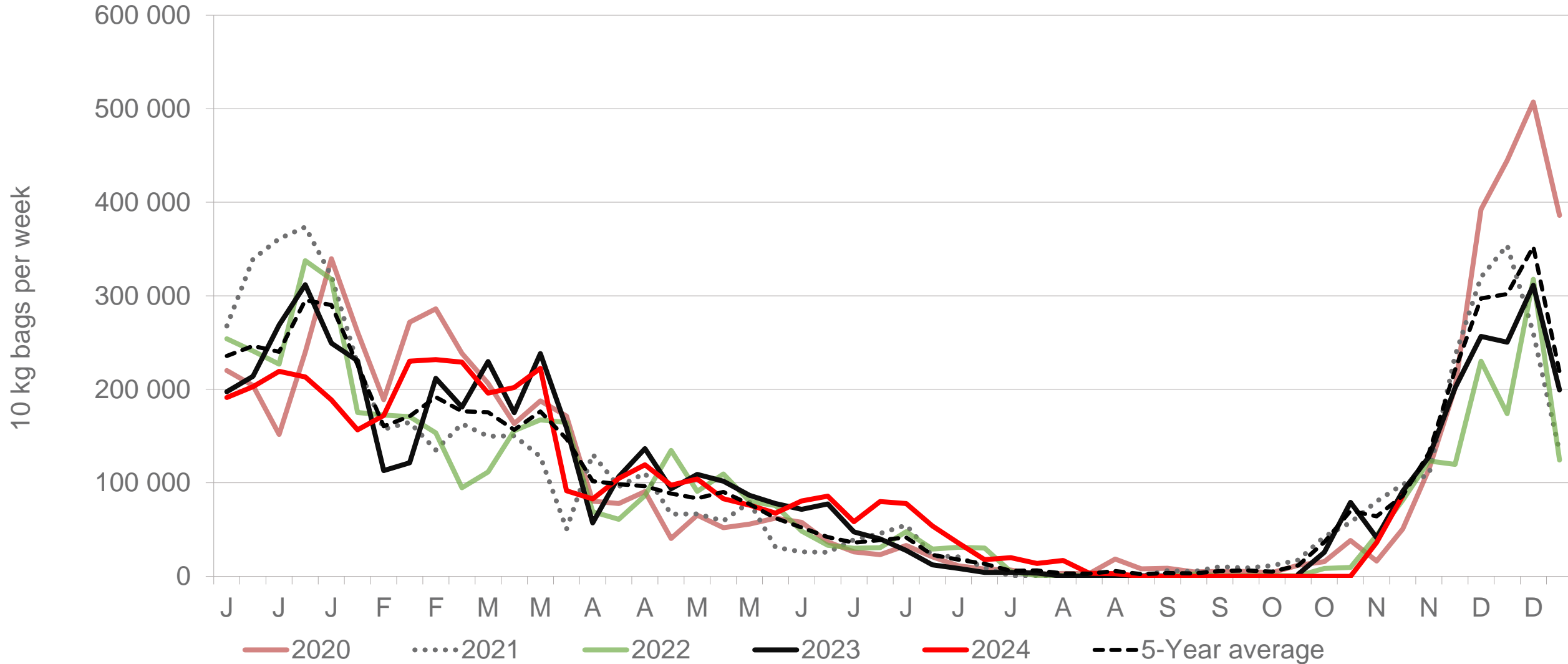
Sandveld: Amount of 10 kg bags per week sold on FPMs (all classes)



Sold 6% bags **more** than the first 46 weeks of 2023 and 806 904 bags **less** than the 5-year average (2019 to 2023) of the first 46 weeks of each year.

Data disclaimer: Potatoes SA does not take responsibility for the accuracy or interpretation of company data re-purposed by 3rd parties

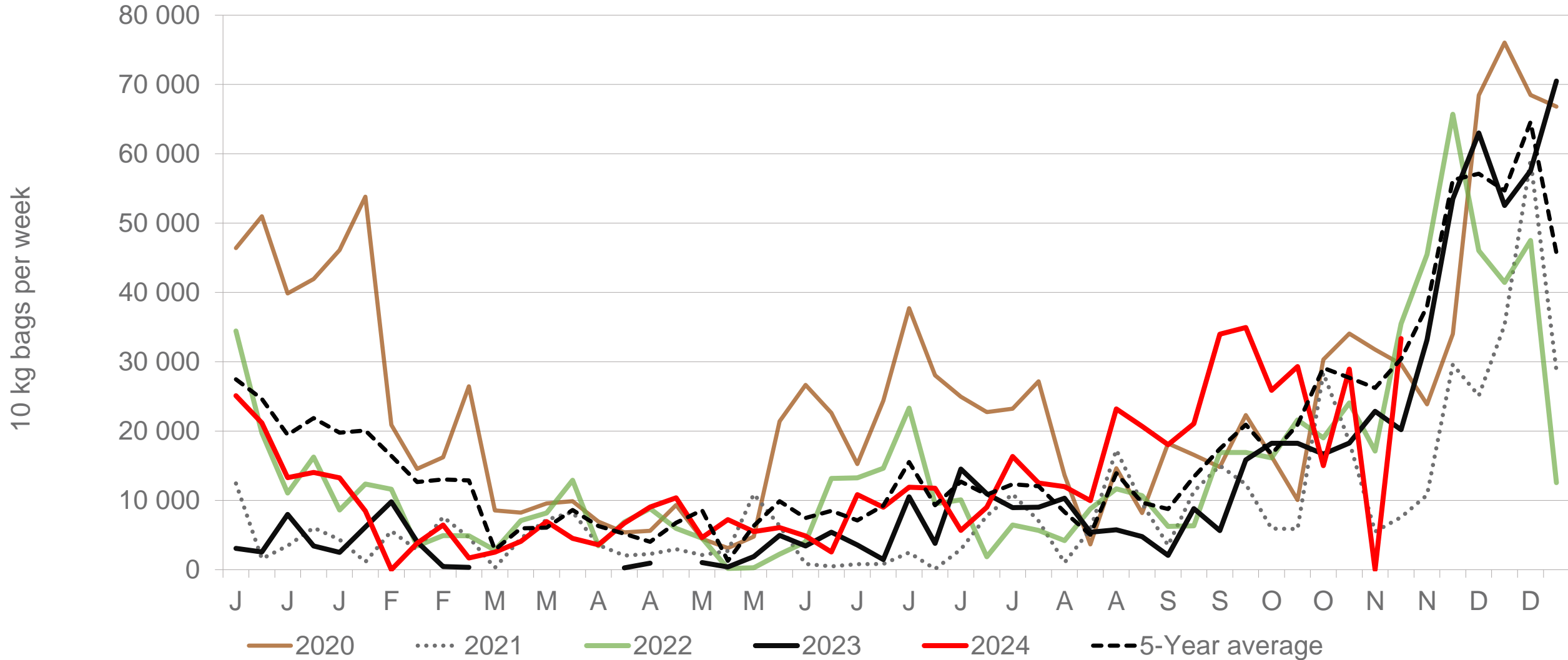
KwaZulu-Natal: Amount of 10 kg bags per week sold on FPMs (all classes)



Sold 1,37% bags **less** than the first 46 weeks of 2023 and 20 167 bags **less** than the 5-year average (2019 to 2023) of the first 46 weeks of each year.

Data disclaimer: Potatoes SA does not take responsibility for the accuracy or interpretation of company data re-purposed by 3rd parties

Eastern Cape: Amount of 10 kg bags per week sold on FPMs (all classes)



Sold 96% bags **more** than the first 46 weeks of 2023 and 34 301 bags **less** than the 5-year average (2019 to 2023) of the 46 weeks of each year.

Data disclaimer: Potatoes SA does not take responsibility for the accuracy or interpretation of company data re-purposed by 3rd parties

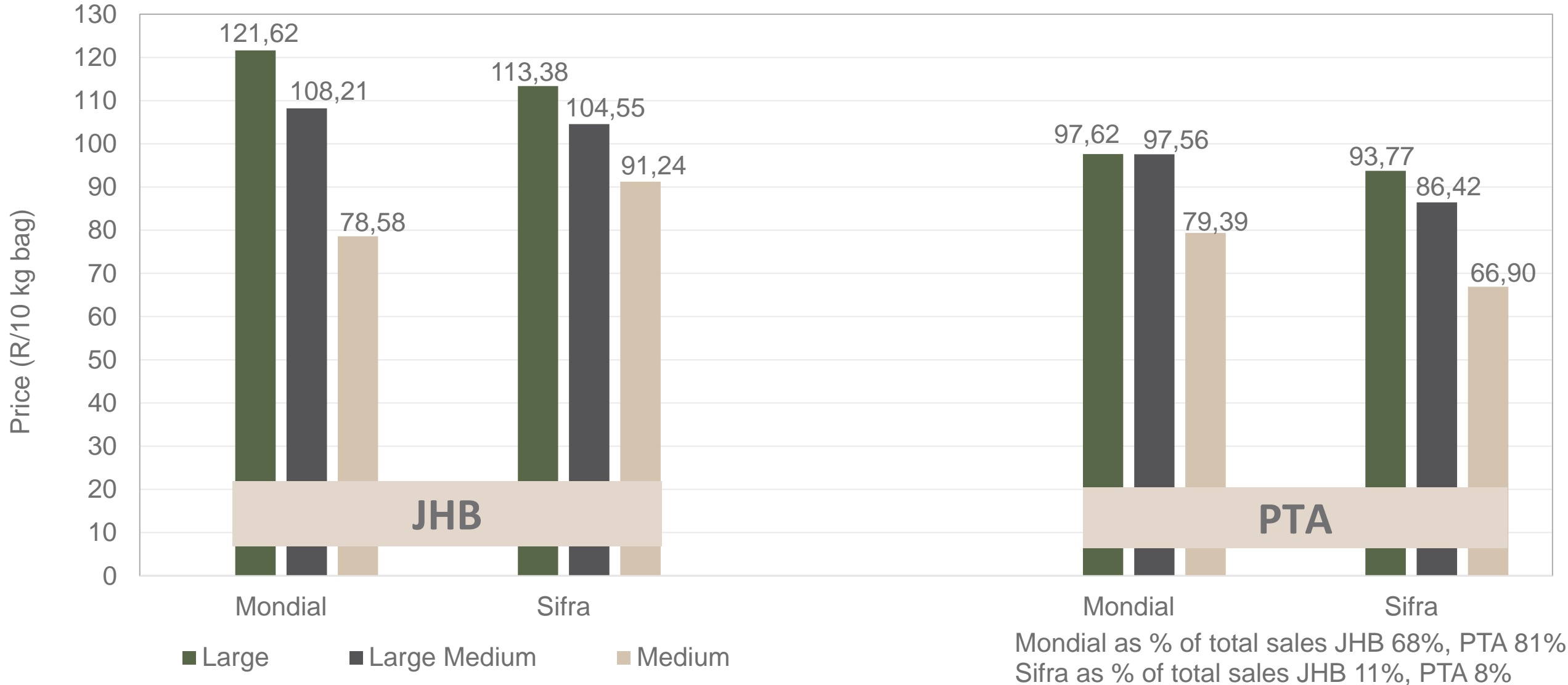
Average weekly prices and volumes for 10 kg bags of potatoes sold on selected markets from selected production regions



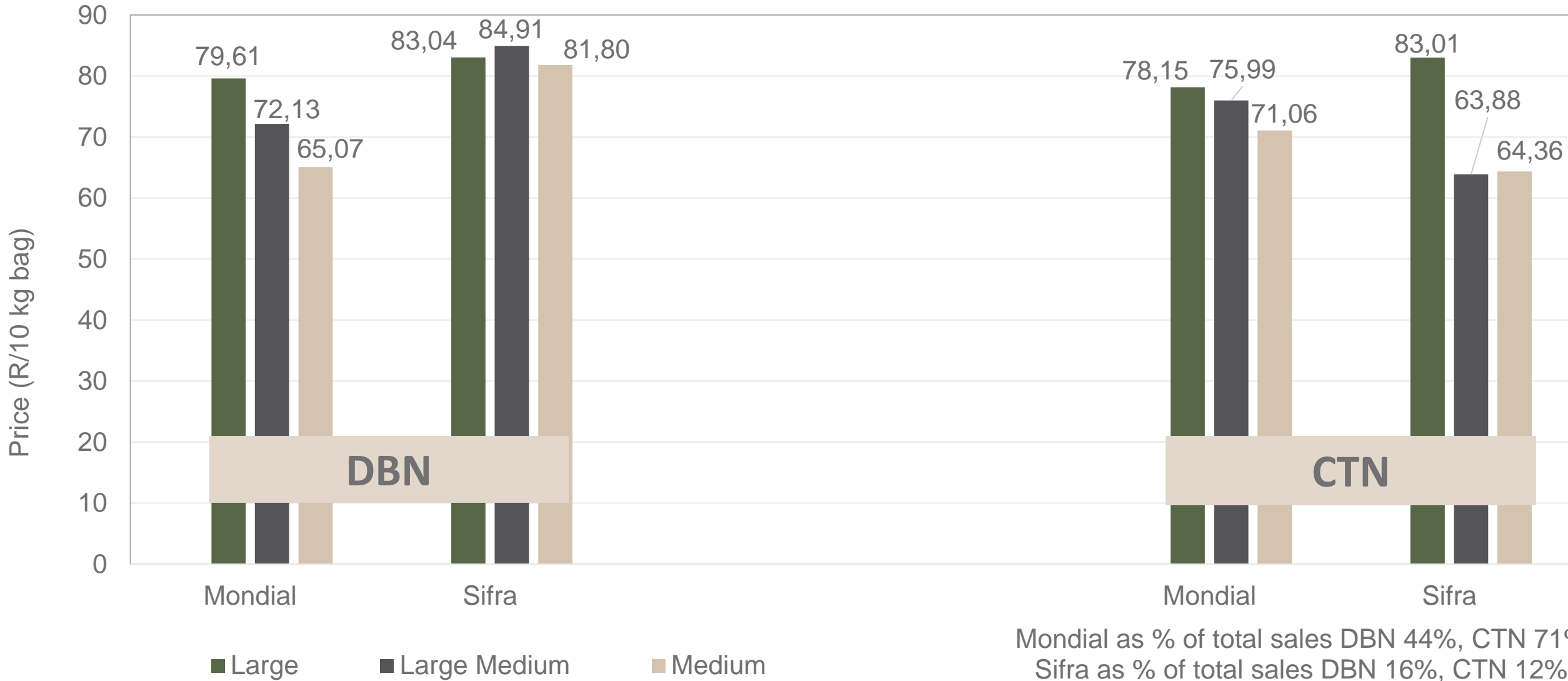
Klas & Grootte	Limpopo												Sandveld		KwaZulu-Natal				Eastern Cape				All Regions	
	JOH		PRE		DUR		KLE		SPR		BLO		CAP		DUR		PIE		EAS		POR		All Markets	
	Volume 10kg	Prices R/10kg	Volume 10kg	Prices R/10kg	Volume 10kg	Prices R/10kg	Volume 10kg	Prices R/10kg	Volume 10kg	Prices R/10kg	Volume 10kg	Prices R/10kg	Volume 10kg	Prices R/10kg	Volume 10kg	Prices R/10kg	Volume 10kg	Prices R/10kg	Volume 10kg	Prices R/10kg	Volume 10kg	Prices R/10kg	Volume 10kg	Prices R/10kg
1L	70 118	115,83	45 659	96,71	10 543	73,15	9 755	78,96	21 681	77,26	7 223	79,23	22 716	77,34	4 143	99,56	1 409	88,79	1 269	97,80	3 763	91,88	242 603	97,55
1L/M	115 114	97,11	61 492	95,26	27 165	68,11	13 117	72,60	22 678	74,54	9 983	66,85	34 911	71,16	12 542	77,73	4 749	70,13	1 294	93,44	2 688	84,89	358 394	87,44
1M	112 979	77,92	58 605	76,75	17 078	58,69	7 505	66,24	16 686	67,34	5 067	65,16	31 092	67,78	22 328	72,48	3 793	63,23	1 584	90,64	5 154	82,46	332 073	74,22
1S	41 254	57,37	10 682	51,84	5 985	43,49	2 378	46,60	5 079	47,54	1 328	36,76	11 414	66,80	4 251	47,33	2 637	47,04	1 051	83,92	2 520	62,19	99 476	55,98
1S/M	54 721	66,82	12 399	61,01	5 822	61,35	431	77,66	3 165	54,88	2 007	68,89	2 462	59,18	3 869	72,24	1 080	87,13	-	-	-	-	94 276	65,51
1XL	1 658	115,13	-	-	-	-	-	-	-	-	-	-	-	-	-	-	-	-	-	-	-	-	1 658	115,13
1XS	18 296	46,30	-	-	-	-	-	-	-	-	-	-	-	-	-	-	-	-	-	-	-	-	21 618	45,68
1XXS	-	-	-	-	-	-	-	-	-	-	-	-	-	-	-	-	-	-	-	-	-	-	-	-
2L	11 076	100,62	8 382	84,80	1 741	64,39	1 313	89,15	2 311	65,93	2 412	79,56	8 204	71,38	110	79,55	675	80,09	346	88,68	930	74,77	46 138	82,38
2L/M	11 855	84,89	11 373	76,64	1 694	64,12	855	76,29	1 383	90,91	1 311	73,63	14 966	69,31	100	39,60	737	61,46	100	75,00	575	72,41	53 335	75,28
2M	11 663	73,97	15 963	62,73	2 434	49,16	382	67,76	2 089	58,01	1 229	64,66	18 139	62,39	16	60,13	1 217	47,70	110	95,00	2 459	66,75	71 424	63,50
2S	1 336	47,42	2 869	53,01	445	31,19	189	38,78	574	42,37	-	-	3 709	48,97	-	-	514	33,89	100	60,00	1 081	48,78	12 494	48,67
2S/M	1 602	61,10	2 546	39,55	1 020	38,23	113	49,91	440	55,07	501	61,72	1 182	45,59	-	-	-	-	-	-	-	-	8 719	48,56
2XL	624	101,57	-	-	-	-	-	-	-	-	-	-	-	-	-	-	-	-	-	-	-	-	624	101,57
2XS	54	41,96	-	-	-	-	-	-	-	-	-	-	-	-	-	-	-	-	-	-	-	-	1 049	19,94
2XXS	-	-	-	-	-	-	-	-	-	-	-	-	-	-	-	-	-	-	-	-	-	-	-	-
3L	1 879	83,56	2 038	59,41	110	55,00	5	20,00	853	99,19	372	53,58	824	75,27	-	-	60	110,00	-	-	-	-	7 182	71,90
3L/M	2 498	64,67	1 582	46,76	-	-	10	110,00	331	41,98	46	33,26	366	64,37	-	-	-	-	-	-	-	-	5 203	56,55
3M	5 654	69,82	2 942	49,34	-	-	-	-	65	100,82	110	20,00	972	42,39	-	-	584	50,98	567	59,29	1 434	50,77	14 478	58,42
3S/M	58	34,48	165	27,45	-	-	-	-	-	-	120	38,00	56	67,64	-	-	-	-	-	-	-	-	399	37,29
3XS	160	35,00	-	-	-	-	-	-	-	-	-	-	-	-	-	-	-	-	-	-	-	-	160	35,00
3XXS	-	-	-	-	-	-	-	-	-	-	-	-	-	-	-	-	-	-	-	-	-	-	-	-
4L	-	-	70	10,43	-	-	-	-	-	-	-	-	-	-	-	-	-	-	-	-	-	-	290	55,62
4L/M	-	-	2 424	36,77	-	-	-	-	-	-	-	-	-	-	-	-	-	-	-	-	-	-	4 138	41,85
4M	-	-	1 032	25,50	-	-	393	61,70	172	39,79	-	-	-	-	-	-	117	85,38	-	-	60	40,00	1 774	39,34
4S	-	-	335	25,85	-	-	-	-	-	-	-	-	-	-	-	-	-	-	-	-	-	-	335	25,85
4S/M	-	-	220	15,18	-	-	-	-	-	-	-	-	-	-	-	-	-	-	-	-	-	-	220	15,18
Total	462 849	84,49	246 663	79,47	75 964	61,89	36 487	71,56	79 085	69,85	32 723	67,89	159 544	67,29	47 623	73,76	18 107	63,85	6 653	86,67	21 224	74,53	1 402 302	77,67

Data disclaimer: Potatoes SA does not take responsibility for the accuracy or interpretation of company data re-purposed by 3rd parties

PTA & JHB markets: Average Prices - Different Sizes (only 10 kg bags)



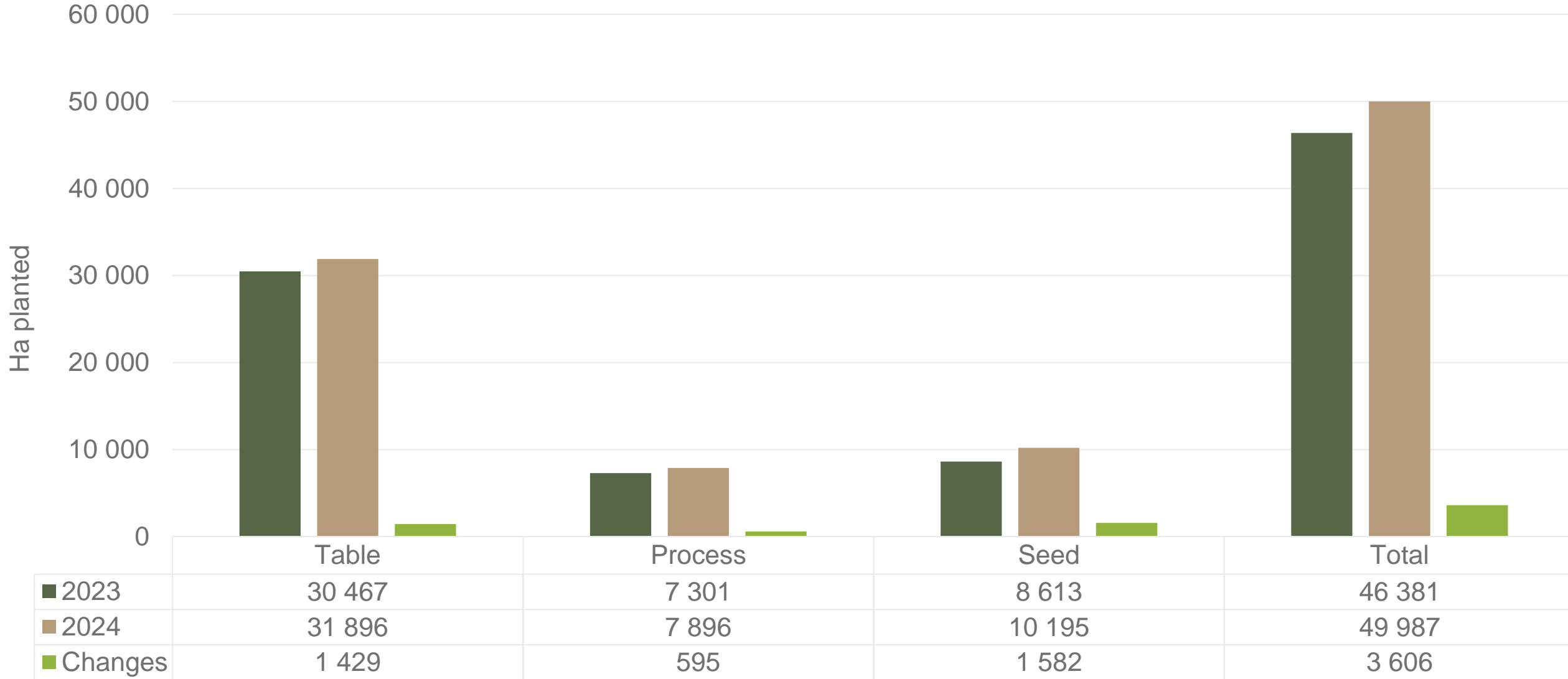
DBN & CTN markets: Average Prices - Different Sizes (only 10 kg bags)



Mondial as % of total sales DBN 44%, CTN 71%
 Sifra as % of total sales DBN 16%, CTN 12%

Data disclaimer: Potatoes SA does not take responsibility for the accuracy or interpretation of company data re-purposed by 3rd parties

Hectares planted to date for season 2023 versus 2024



Regions finished: Limpopo early and main, Gauteng late, North west main and late, Eastern Free State main, Western Free State early and late, Southwestern Free State main, Ceres main, Eastern Cape winter and summer, North Eastern Cape main, Northern cape early and main, KwaZulu Natal summer and winter, Marble hall main, Sandveld summer and early winter

Data disclaimer: Potatoes SA does not take responsibility for the accuracy or interpretation of company data re-purposed by 3rd parties

Thank you for your time

Feel free to contact us

Dikgetho@potatoes.co.za

Billy@potatoes.co.za

Jodie@potatoes.co.za



+27 (0)12 349 1906



6 De Havilland Crescent
Persequor Techno Park
Persequor Park
Pretoria



www.potatoes.co.za



Potatoes
Aartappels SA