



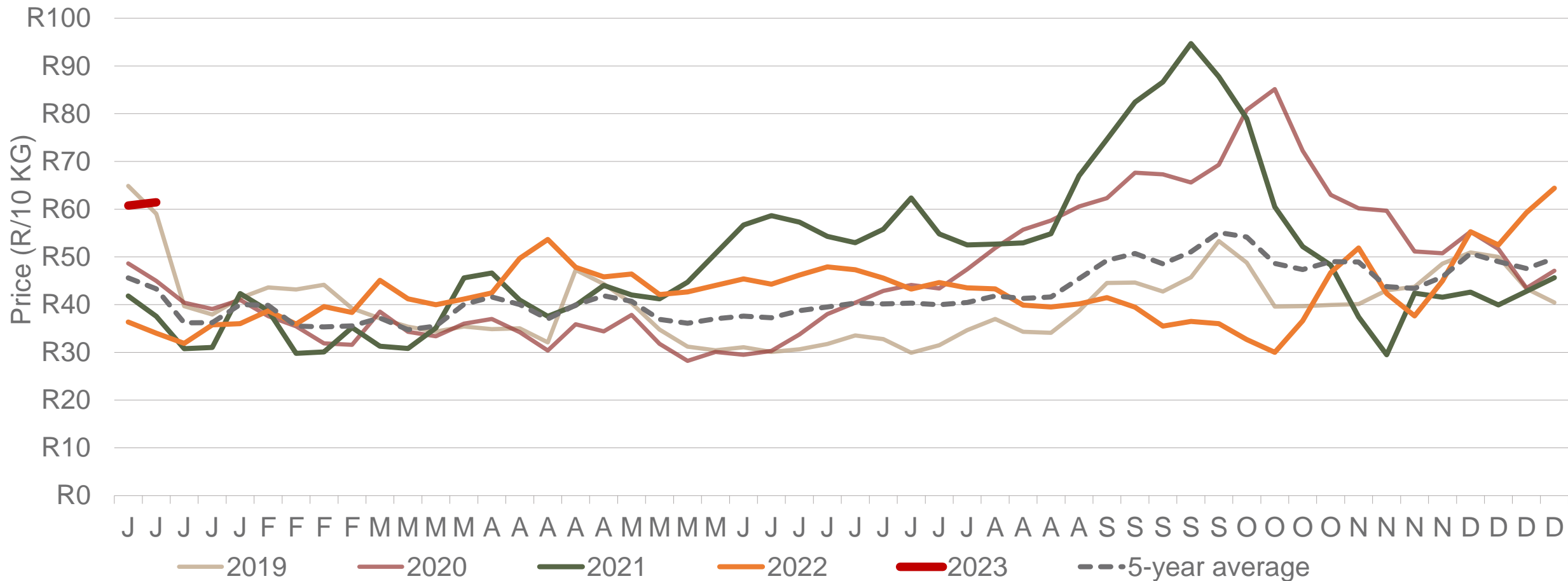
Potatoes
Aartappels SA

Weekly Market Information

13 January 2023

www.potatoes.co.za

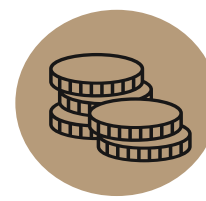
Average weekly price – all markets & all classes



Number of bags sold

15%

(Week on Week)



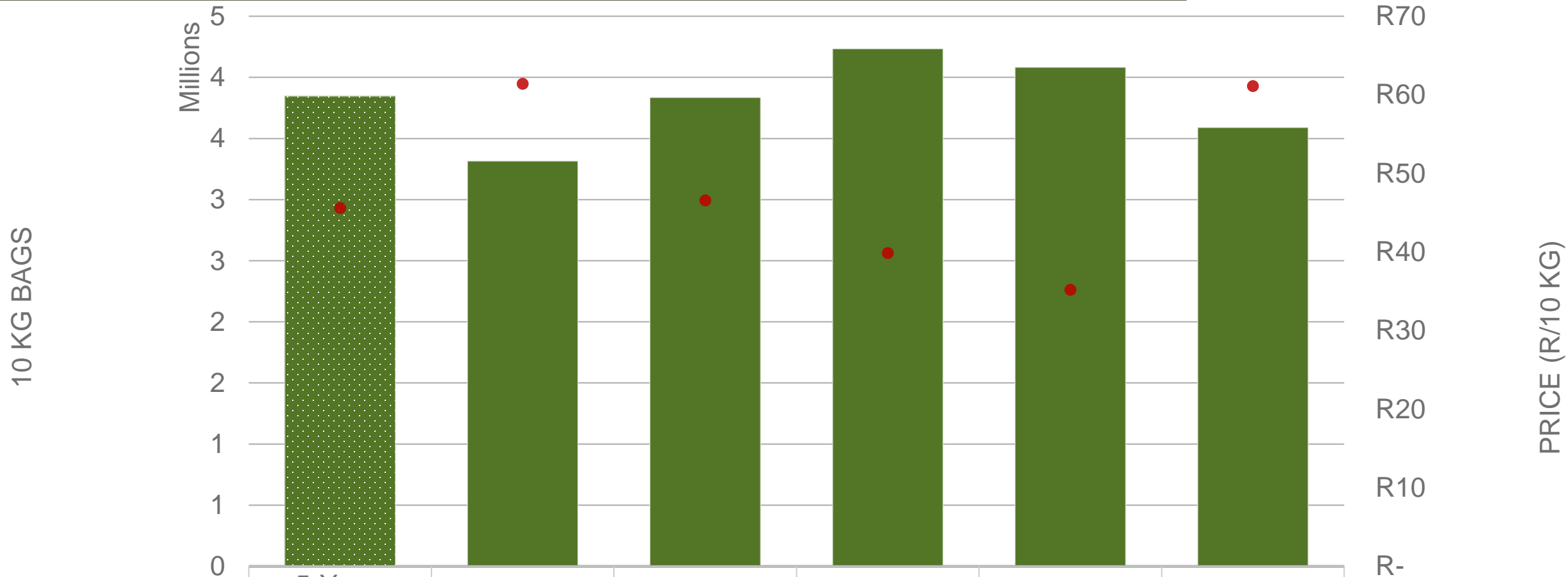
Average weekly price

1%

(Week on week)



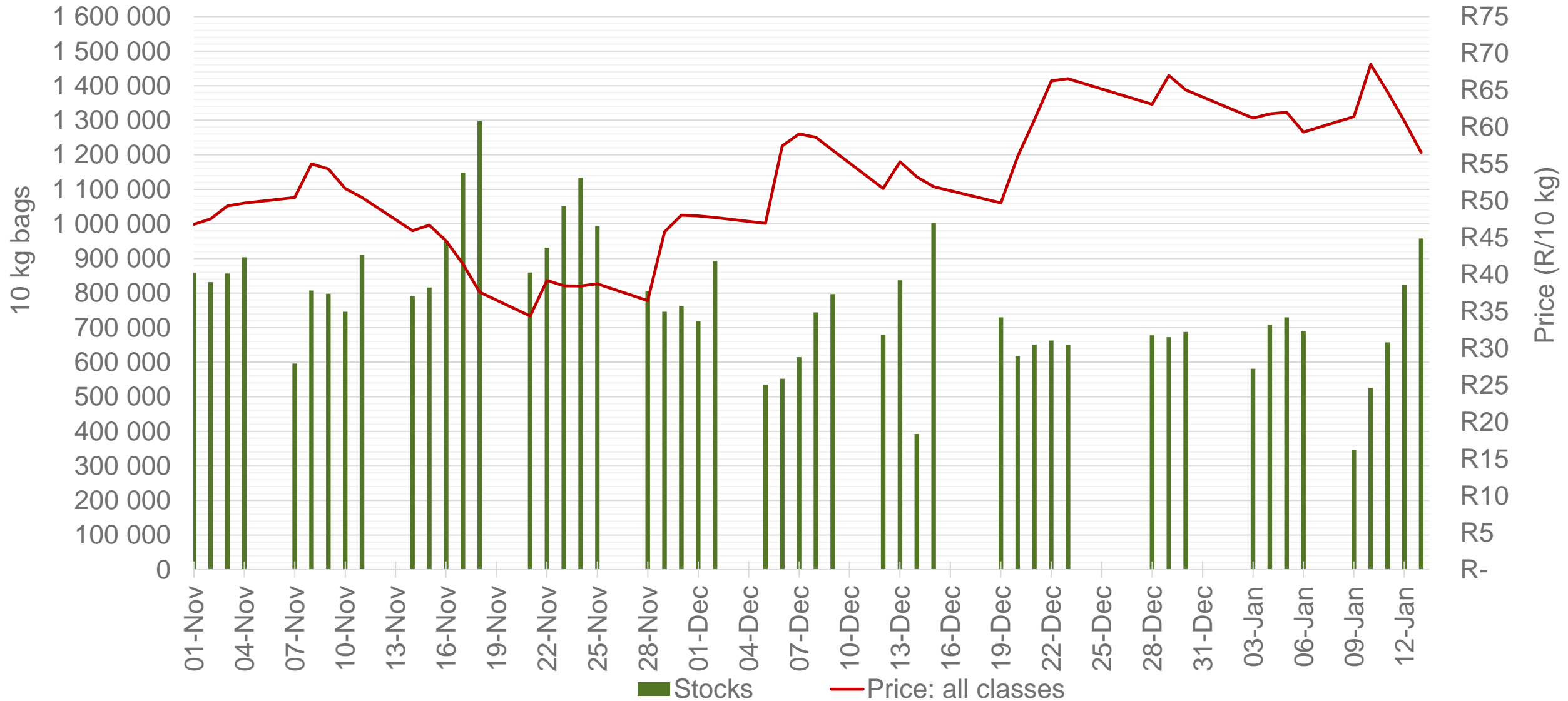
Cumulative total number of 10 kg bags sold on markets: First 2 weeks of the year 2023



■ Number of bags sold	3 846 625	3 316 101	3 835 175	4 234 956	4 082 194	3 590 660
● Average price	R 45.60	R 61.38	R 46.57	R 39.85	R 35.18	R 61.12

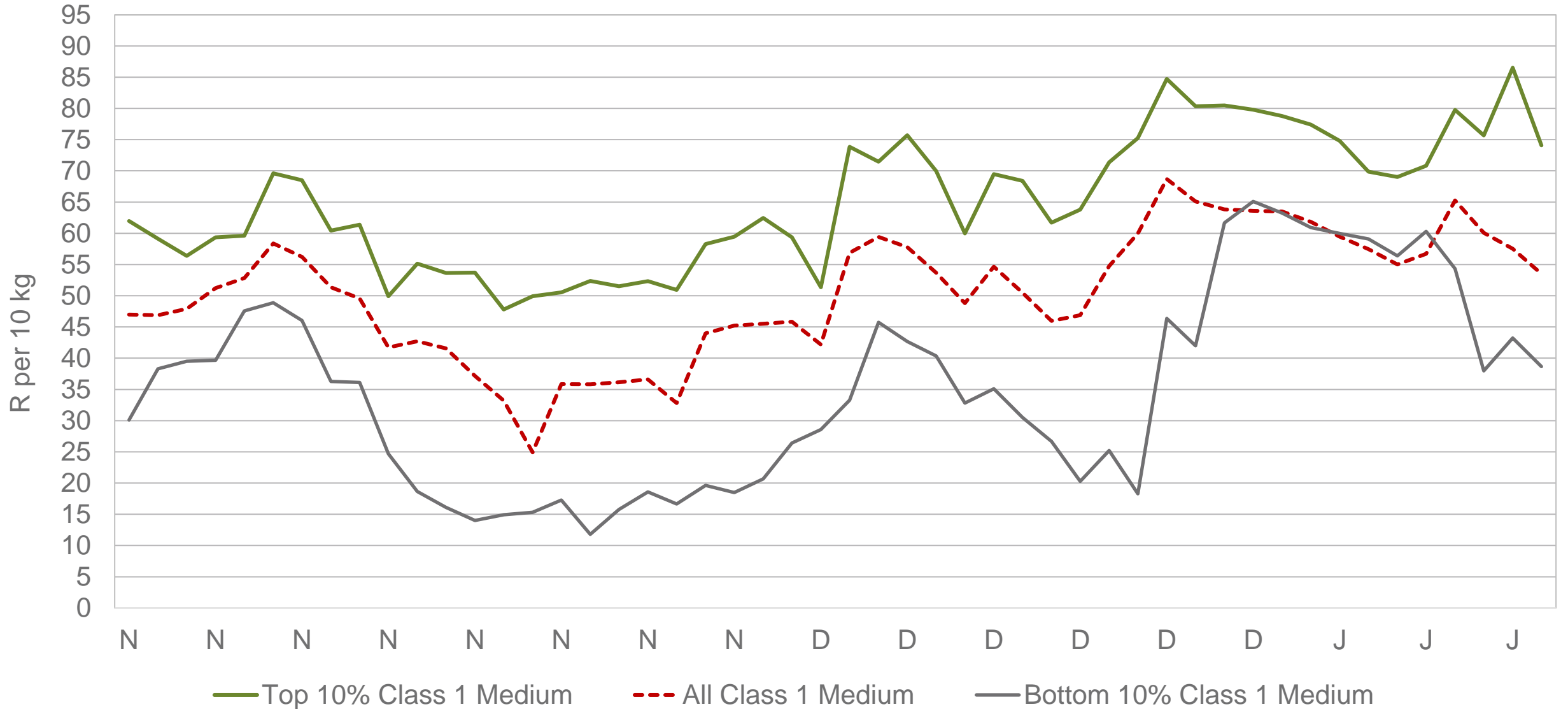
Sold 255 965 bags **less** than the **5-year average** (2019 to 2023) of the first 2 weeks of each year

RSA daily Price versus Daily Available stocks (all classes & all sizes)



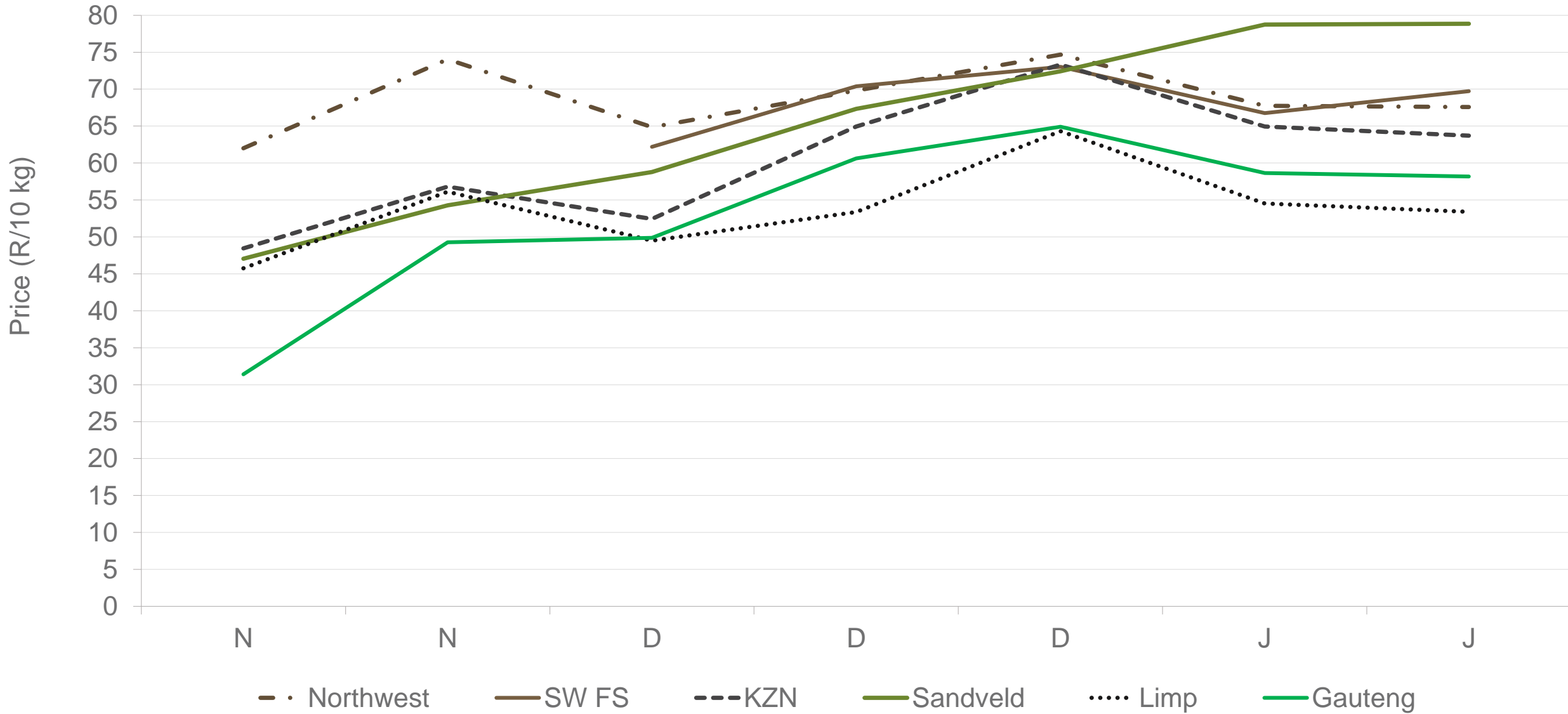
Data disclaimer: Potatoes SA does not take responsibility for the accuracy or interpretation of company data re-purposed by 3rd parties

JHB market daily : Top 10% versus Bottom 10% prices – Class 1 Medium (Since November 2022)



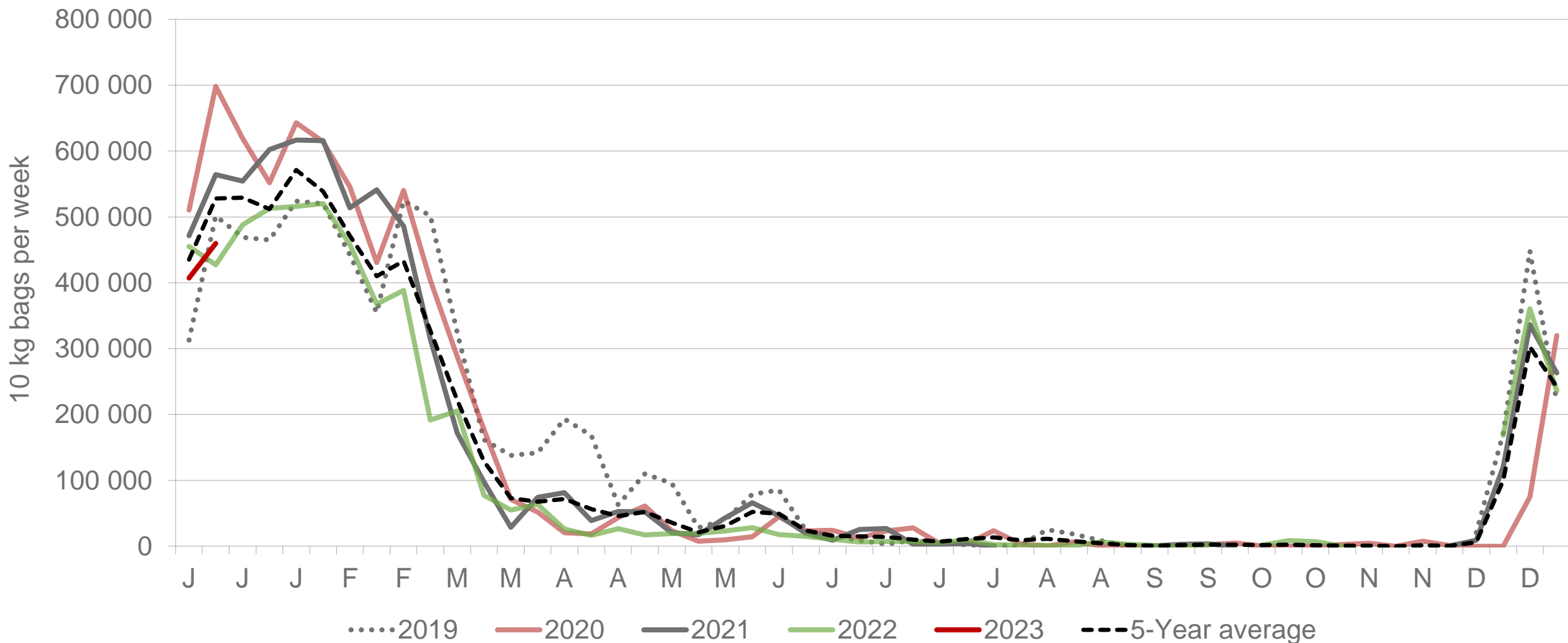
Data disclaimer: Potatoes SA does not take responsibility for the accuracy or interpretation of company data re-purposed by 3rd parties

Average Class 1 Medium prices in regions



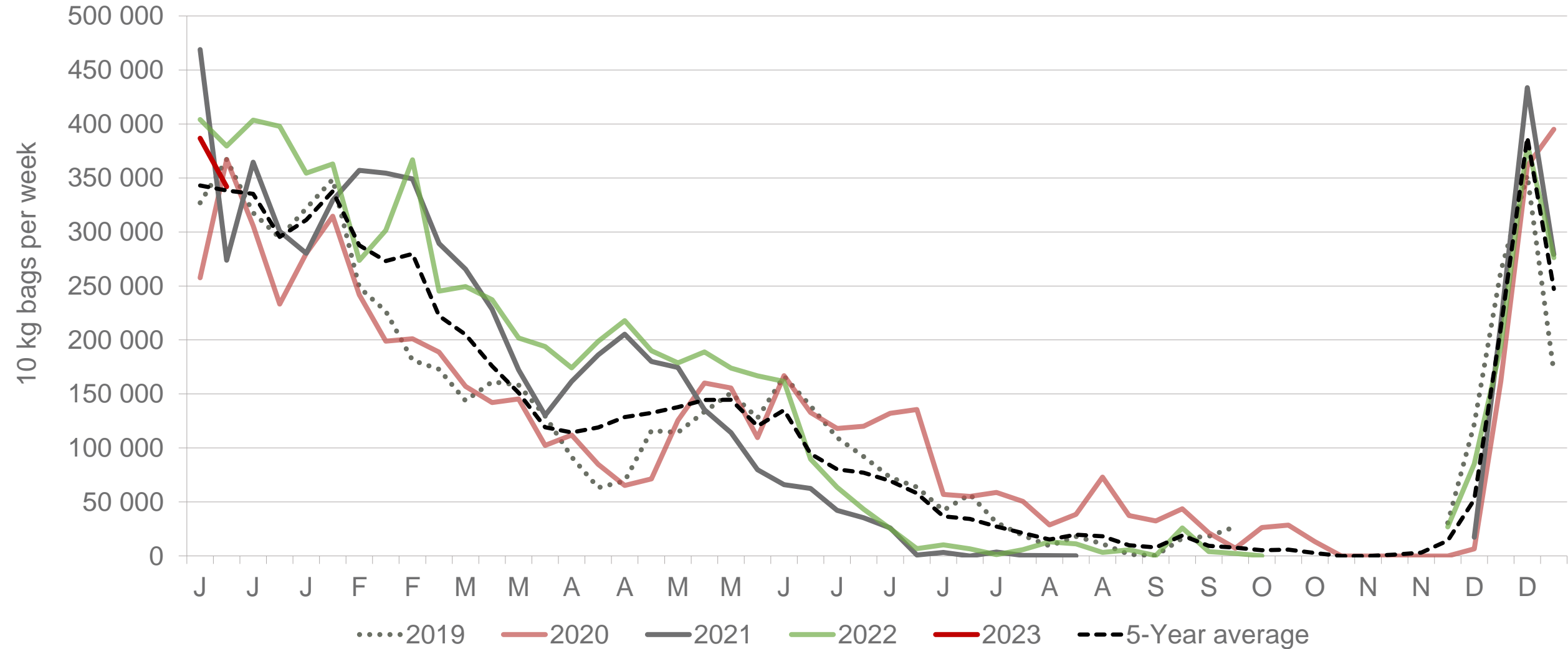
Data disclaimer: Potatoes SA does not take responsibility for the accuracy or interpretation of company data re-purposed by 3rd parties

South Western Free State: Amount of 10 kg bags per week sold on FPMs (all classes)



Sold 96 069 bags **less** than the **5-year average** (2018 to 2022) of the first two weeks of each year.

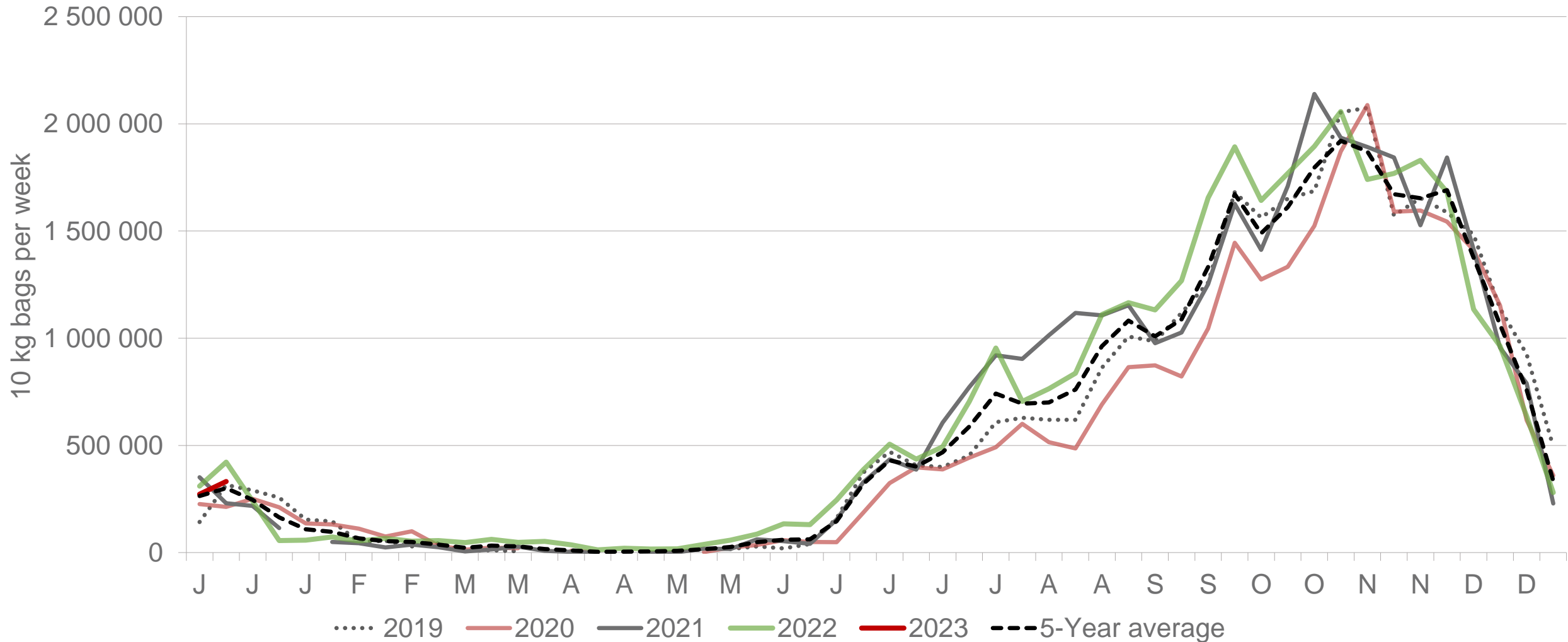
North West: Amount of 10 kg bags per week sold on FPMs (all classes)



Sold 47 191 bags more than the **5-year average** (2018 to 2022) of the first two weeks of each year.

Data disclaimer: Potatoes SA does not take responsibility for the accuracy or interpretation of company data re-purposed by 3rd parties

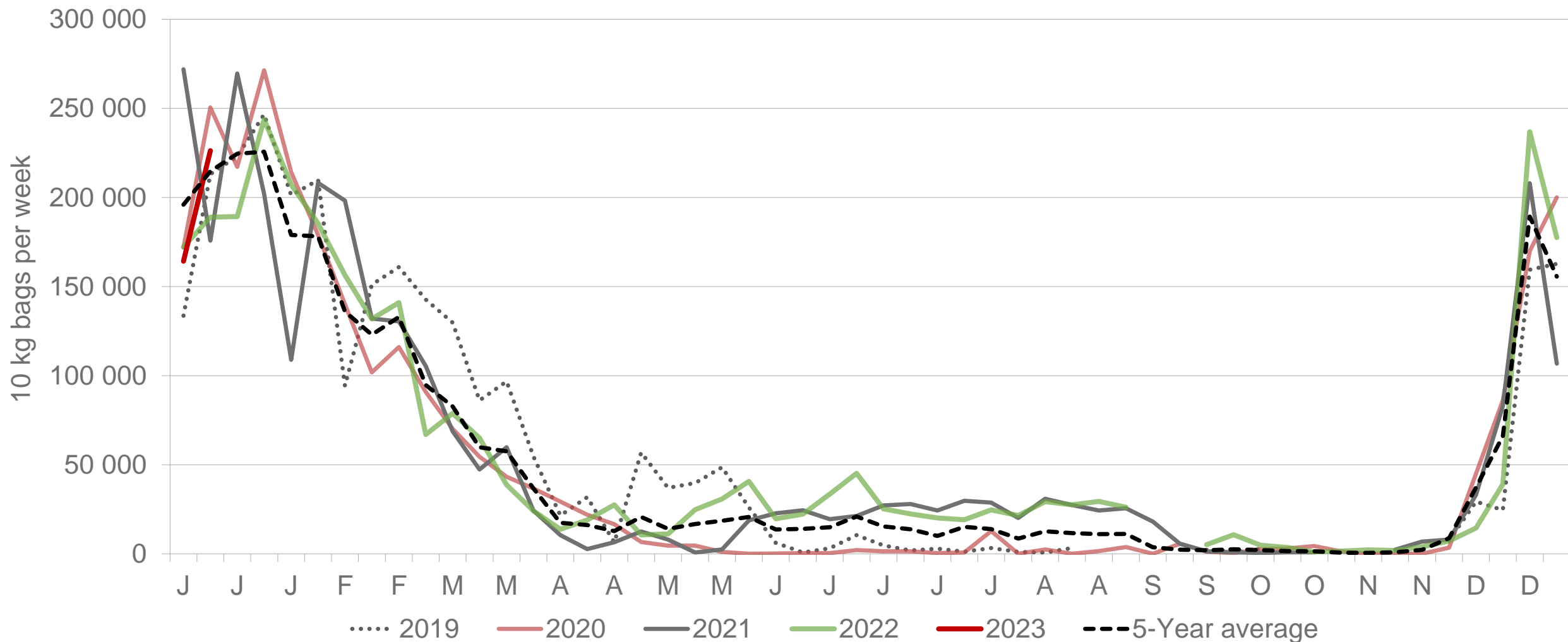
Limpopo: Amount of 10 kg bags per week sold on FPMs (all classes)



Sold 38 693 bags **more** than the **5-year average** (2018 to 2022) of the first two weeks of each year.

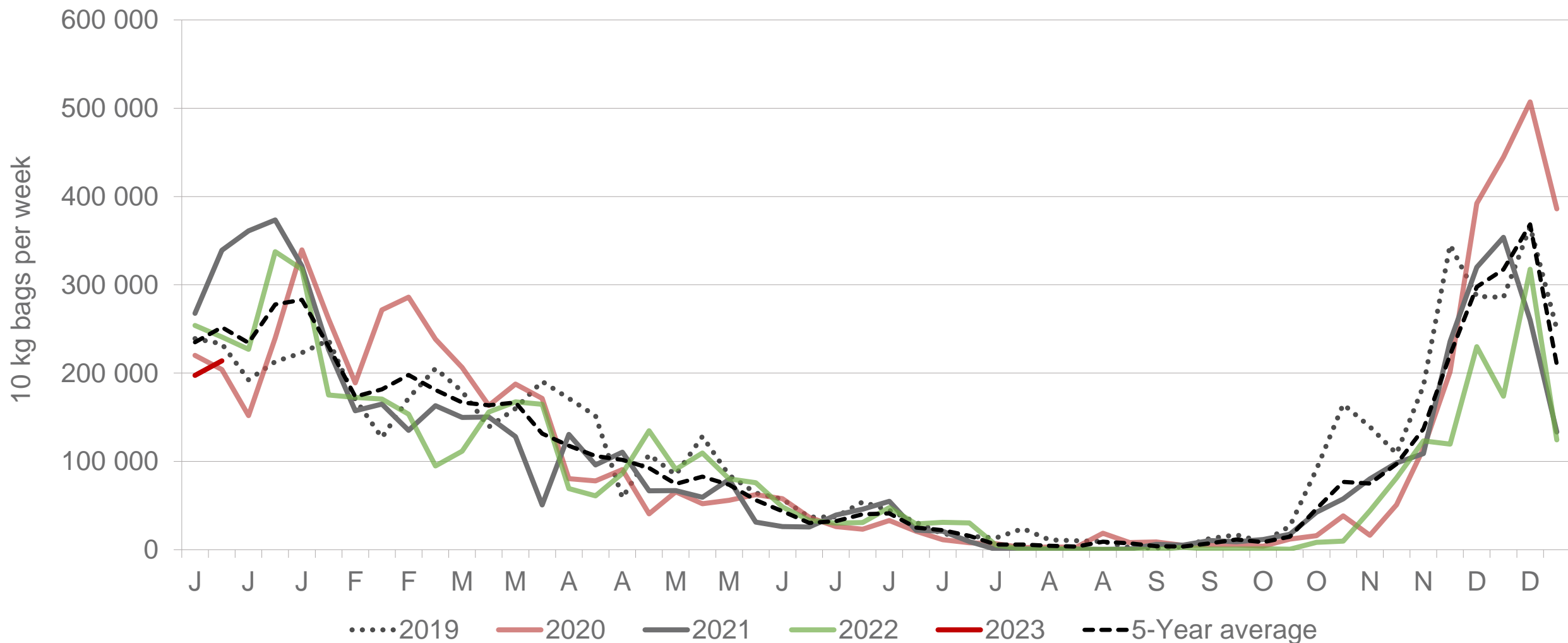
Data disclaimer: Potatoes SA does not take responsibility for the accuracy or interpretation of company data re-purposed by 3rd parties

Gauteng: Amount of 10 kg bags per week sold on FPMs (all classes)



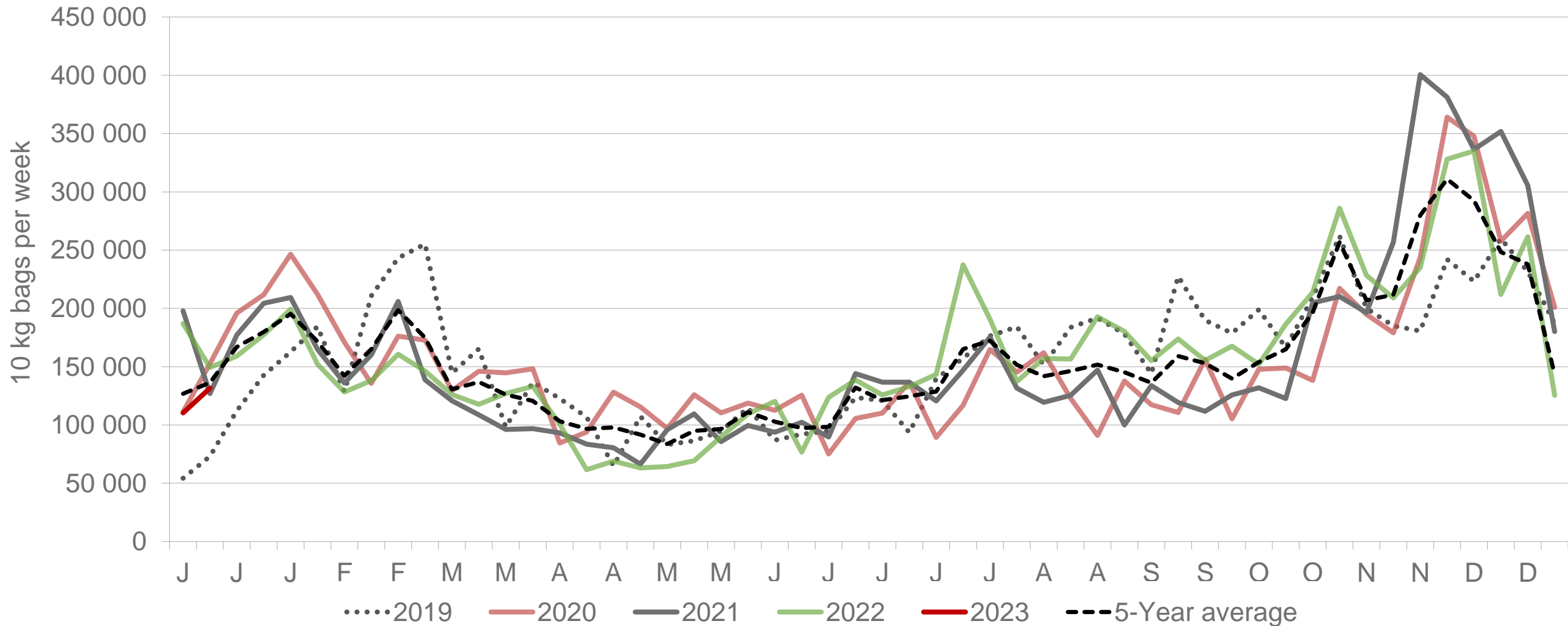
Sold 20 169 bags **less** than the **5-year average** (2018 to 2022) of the first two weeks of each year.

KwaZulu-Natal: Amount of 10 kg bags per week sold on FPMs (all classes)



Sold 75 537 bags **less** than the **5-year average** (2018 to 2022) of the first two weeks of each year.

Sandveld: Amount of 10 kg bags per week sold on FPMs (all classes)



Sold 21 184 bags **less** than the **5-year average** (2018 to 2022) of the first two weeks of each year.

Data disclaimer: Potatoes SA does not take responsibility for the accuracy or interpretation of company data re-purposed by 3rd parties

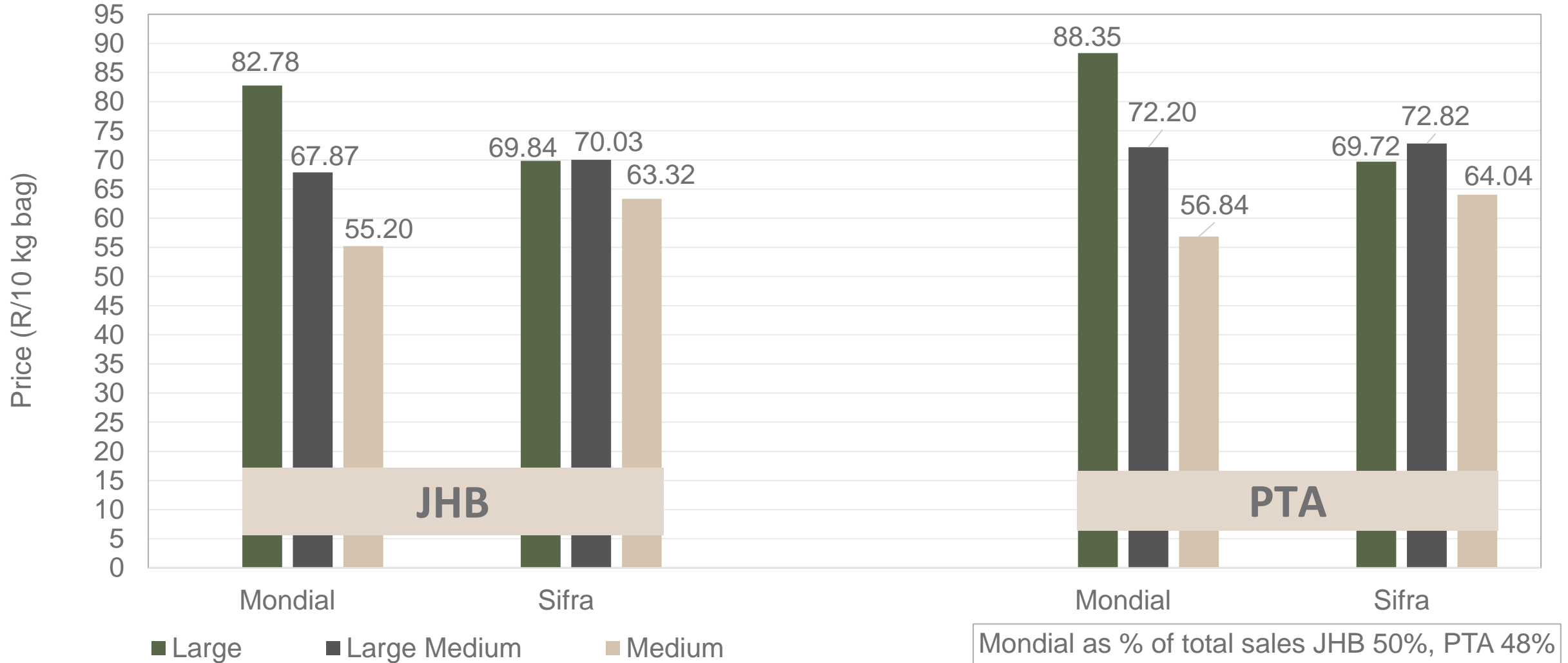
Average weekly prices and volumes for 10 kg bags of potatoes sold on selected markets from selected production regions



Klas & Grootte	South Western Freestate				North West				Limpopo				Gauteng				KwaZulu-Natal				Sandveld		All Regions	
	JOH		PRE		JOH		PRE		JOH		PRE		JOH		PRE		DUR		PIE		CAP		All Markets	
	Volume	Prices	Volume	Prices	Volume	Prices	Volume	Prices	Volume	Prices	Volume	Prices	Volume	Prices	Volume	Prices	Volume	Prices	Volume	Prices	Volume	Prices	Volume	Prices
	10kg	R/10kg	10kg	R/10kg	10kg	R/10kg	10kg	R/10kg	10kg	R/10kg	10kg	R/10kg	10kg	R/10kg	10kg	R/10kg	10kg	R/10kg	10kg	R/10kg	10kg	R/10kg	10kg	R/10kg
1L	32 269	70.02	11 029	69.78	30 518	75.06	29 739	74.53	26 694	74.94	11 511	82.73	60 656	70.87	7 122	72.86	12 950	62.58	5 722	73.74	14 585	90.82	408 265	75.58
1L/M	33 146	69.88	13 755	72.72	29 807	73.19	24 735	73.13	53 349	58.79	16 652	67.43	38 401	65.02	5 162	69.83	10 010	66.91	3 319	66.95	22 193	83.39	439 073	69.46
1M	22 557	67.38	10 401	68.78	17 851	67.04	14 948	66.15	63 402	52.93	17 145	52.96	42 017	55.22	11 174	55.04	17 643	53.83	5 751	59.36	31 987	79.06	422 289	61.83
1S	3 889	40.63	1 159	34.83	11 994	42.66	6 394	37.84	15 541	29.97	5 681	25.11	8 670	35.68	3 341	34.14	4 462	40.62	2 319	44.52	15 591	61.47	127 763	41.46
1S/M	6 616	48.86	4 155	46.37	8 622	55.05	8 562	52.91	14 045	36.66	6 229	32.92	7 145	47.05	2 028	44.57	1 585	41.12	305	35.57	2 479	66.66	113 643	49.05
1XL	-	-	-	-	-	-	-	-	-	-	-	-	-	-	-	-	-	-	-	-	-	-	-	-
1XS	4 437	26.42	-	-	6 973	31.70	-	-	5 942	17.40	-	-	3 197	21.44	-	-	-	-	-	-	-	-	21 767	24.38
1XXS	-	-	-	-	-	-	-	-	-	-	-	-	-	-	-	-	-	-	-	-	-	-	-	-
2L	2 755	71.83	1 513	67.30	216	72.36	1 337	64.61	15 028	59.14	3 888	67.27	3 051	58.28	131	31.91	1 776	76.52	1 013	73.98	1 727	77.58	73 157	65.79
2L/M	1 674	64.35	1 422	68.29	2 311	56.56	667	70.52	15 069	51.41	6 576	57.21	3 983	45.38	103	64.17	1 514	76.35	1 578	64.06	4 476	75.52	89 920	56.76
2M	330	65.00	472	64.54	332	43.64	1 080	45.10	6 086	43.22	2 606	50.54	3 109	45.85	354	57.64	2 118	54.98	2 079	51.24	5 728	70.26	60 418	51.98
2S	400	38.85	100	40.00	-	-	110	40.00	-	-	171	22.40	1 370	22.95	3	10.00	482	41.30	275	40.76	2 007	49.83	16 288	31.99
2S/M	-	-	158	40.57	220	45.00	76	62.33	2 973	29.44	1 698	30.15	-	-	-	-	5	25.00	4	50.00	619	61.00	17 072	38.21
2XL	-	-	-	-	-	-	-	-	-	-	-	-	-	-	-	-	-	-	-	-	-	-	-	-
2XS	-	-	-	-	-	-	-	-	-	-	-	-	-	-	-	-	-	-	-	-	-	-	648	12.99
2XXS	-	-	-	-	-	-	-	-	-	-	-	-	-	-	-	-	-	-	-	-	-	-	-	-
3L	1 197	47.92	340	49.49	137	64.23	133	60.00	120	60.00	782	46.73	523	43.63	-	-	-	-	200	49.66	100	56.00	13 525	50.15
3L/M	-	-	-	-	2 970	54.81	2 970	51.21	2 071	40.56	862	47.87	-	-	-	-	-	-	273	24.25	-	-	17 384	49.29
3M	3 304	41.71	2 578	35.74	2 426	45.05	1 873	43.47	1 981	31.67	558	33.59	3 165	34.63	391	28.83	-284	234.02	913	25.57	3 522	52.71	44 575	39.18
3S/M	220	12.00	-	-	330	36.67	330	40.00	695	29.46	388	26.94	-	-	-	-	-	-	-	-	-	-	6 684	32.46
3XS	-	-	-	-	-	-	-	-	-	-	-	-	-	-	-	-	-	-	-	-	-	-	-	-
3XXS	-	-	-	-	-	-	-	-	-	-	-	-	-	-	-	-	-	-	-	-	-	-	-	-
4L	-	-	-	-	-	-	-	-	-	-	-	-	-	-	-	-	-	-	-	-	572	15.00	794	19.27
4L/M	-	-	-	-	-	-	-	-	-	-	110	40.00	-	-	-	-	-	-	-	-	-	-	730	36.32
4M	-	-	-	-	-	-	-	-	-	-	-	-	-	-	-	-	1 216	42.48	128	29.89	-	-	4 273	39.76
4S	-	-	-	-	-	-	-	-	-	-	15	10.00	-	-	-	-	-	-	-	-	-	-	267	10.31
4S/M	-	-	-	-	-	-	-	-	-	-	-	-	-	-	-	-	-	-	-	-	-	-	-	-
Total	112 794	64.14	48 179	64.32	114 707	63.99	97 902	64.10	222 996	52.76	77 289	55.61	175 361	59.85	29 937	58.21	55 598	55.61	24 372	59.33	116 655	72.79	1 920 459	61.43

Data disclaimer: Potatoes SA does not take responsibility for the accuracy or interpretation of company data re-purposed by 3rd parties

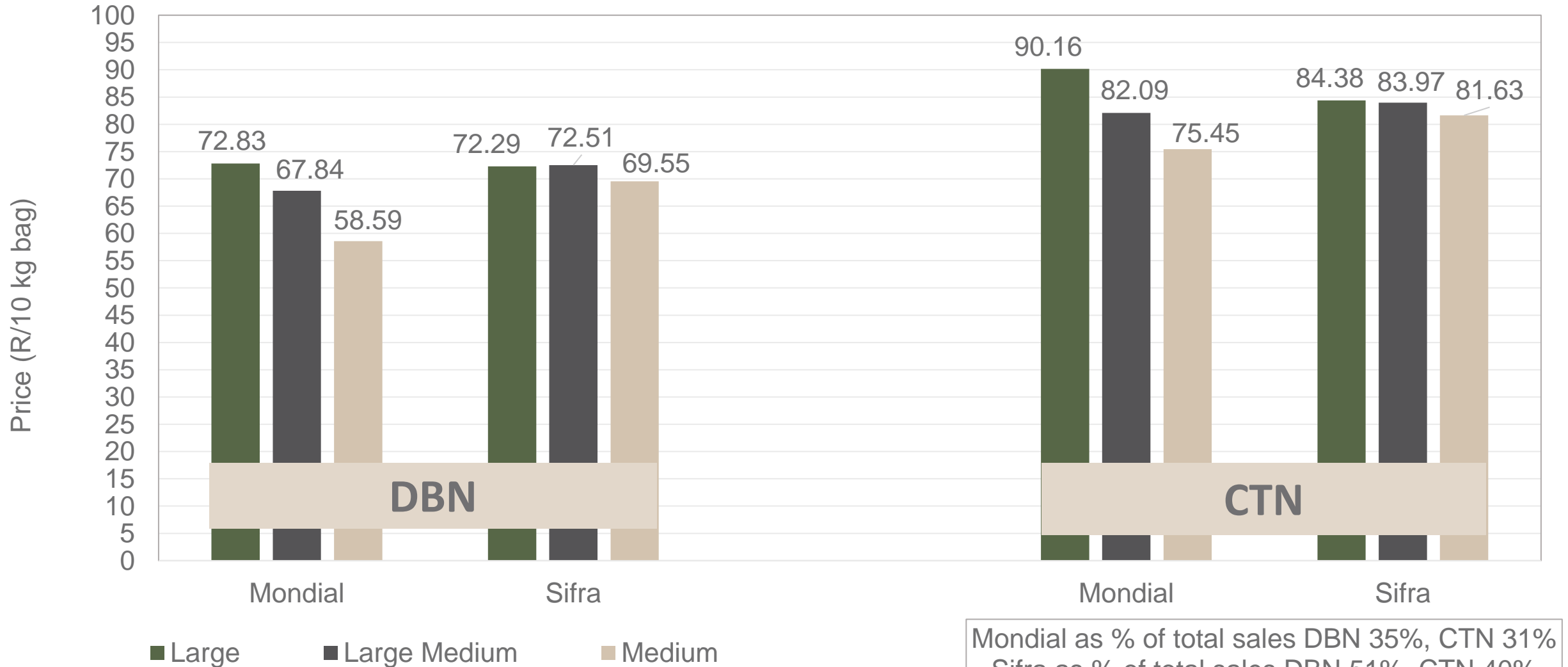
PTA & JHB markets: Average Prices - Different Sizes (only 10 kg bags)



Mondial as % of total sales JHB 50%, PTA 48%
 Sifra as % of total sales JHB 41%, PTA 37%

Data disclaimer: Potatoes SA does not take responsibility for the accuracy or interpretation of company data re-purposed by 3rd parties

DBN & CTN markets: Average Prices - Different Sizes (only 10 kg bags)




Mondial as % of total sales DBN 35%, CTN 31%
 Sifra as % of total sales DBN 51%, CTN 40%


Thank you for your time

Feel free to contact us

 jano@potatoes.co.za
dikgetho@potatoes.co.za

 +27 (0)12 349 1906

 6 De Havilland Crescent
Persequor Techno Park
Persequor Park
Pretoria

 www.potatoes.co.za



Potatoes
Aartappels SA