

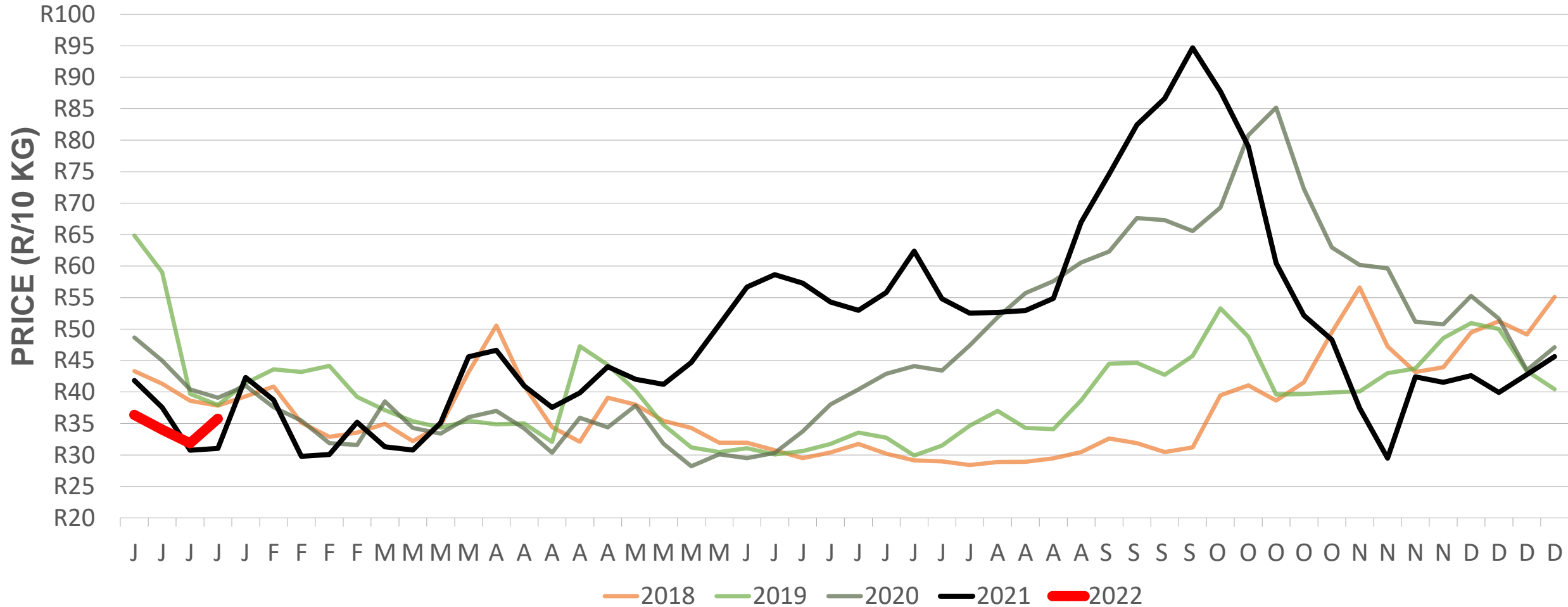


Potatoes
Aartappels SA

Weekly Market Information
28 January 2022

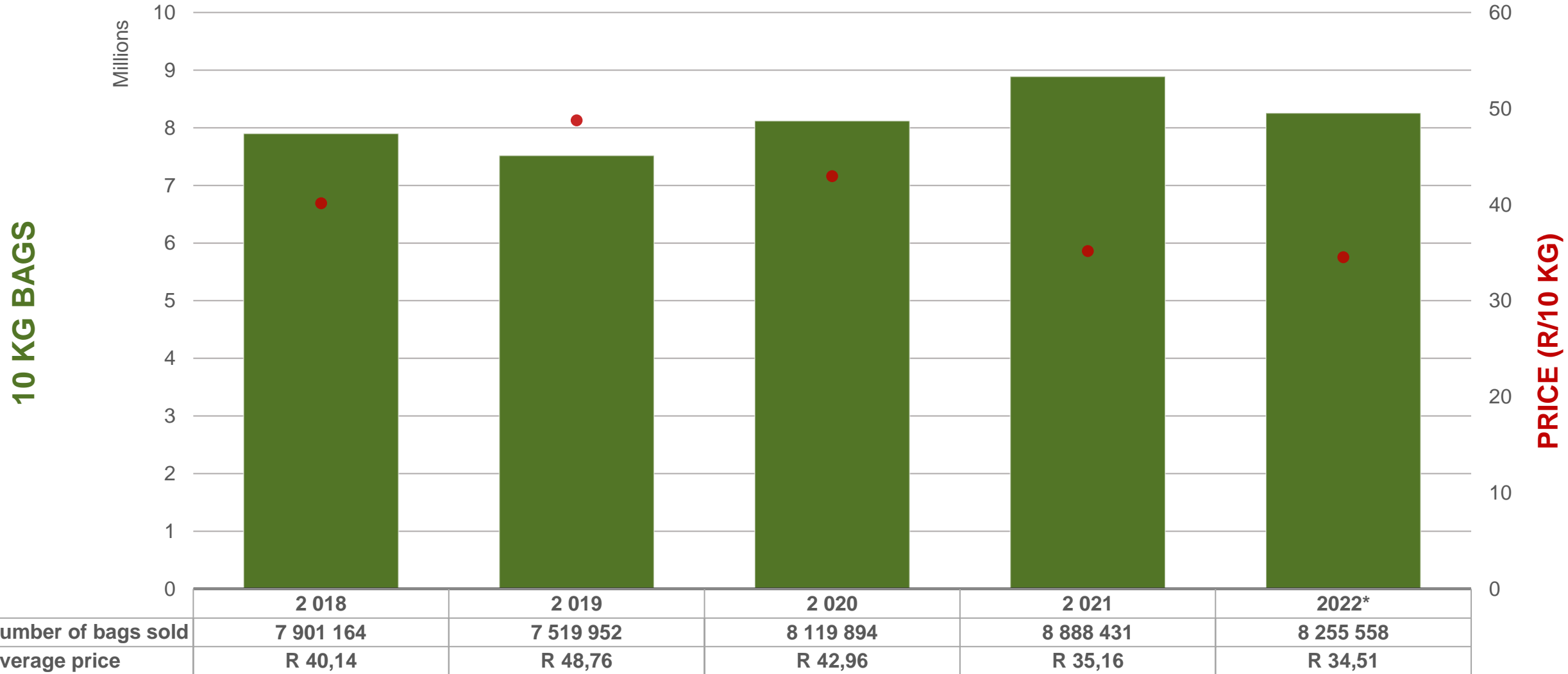
www.potatoes.co.za

Average weekly price – all markets & all classes



Weekly price	
R35,75	 12% (week on week)

Cumulative total number of 10 kg bags sold on markets: First four weeks of the year 2022

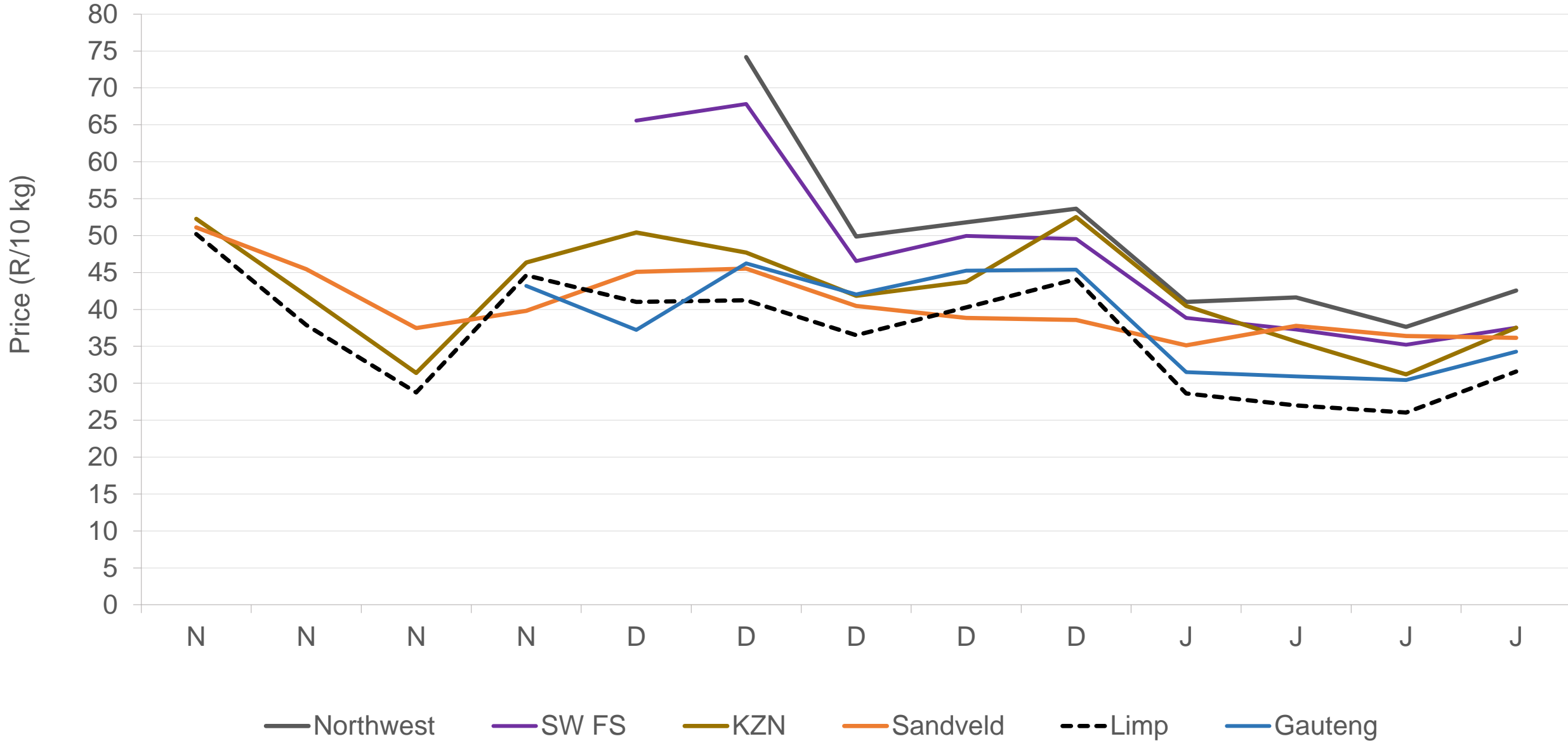


Sold 343 321 bags more than the **5-year average** (2017 to 2021) of the first 4 weeks of each year.

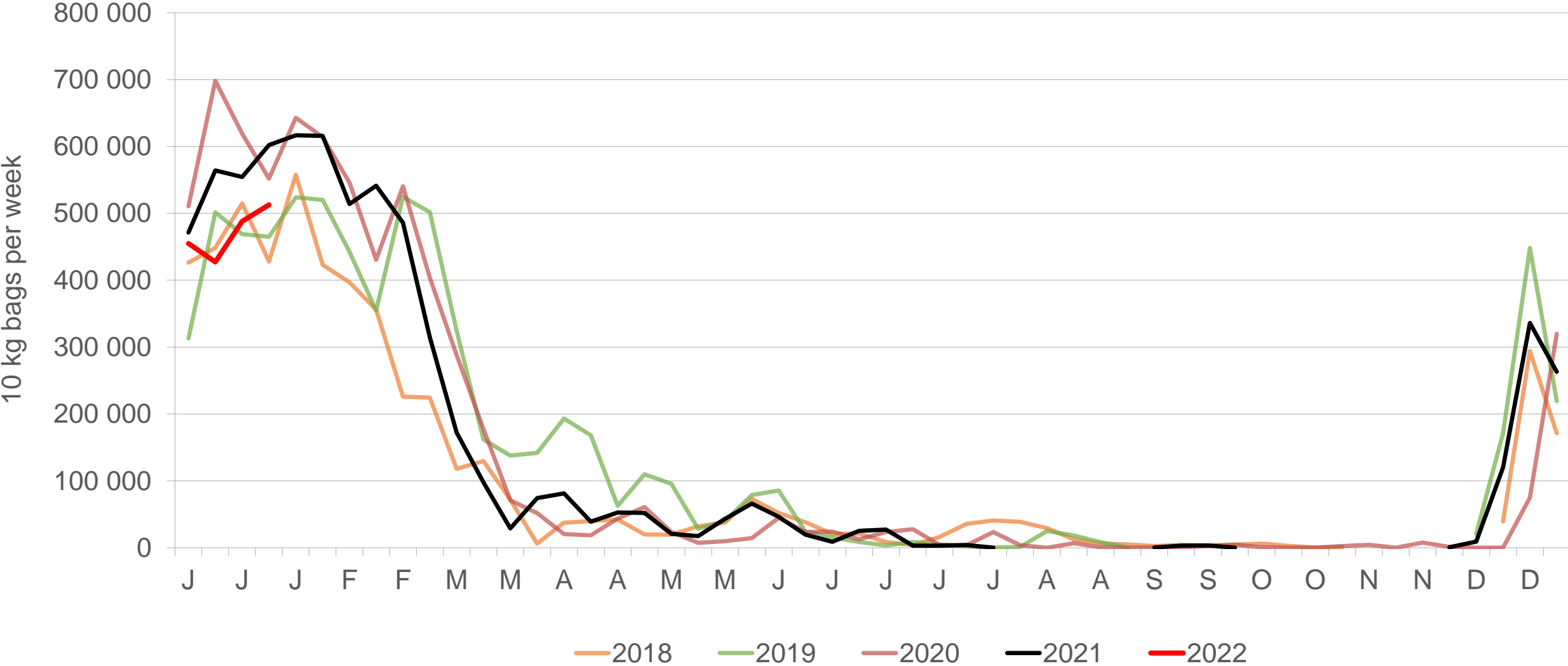
RSA daily Price versus Daily Available stocks (all classes & all sizes)



Average Class 1 Medium prices in regions

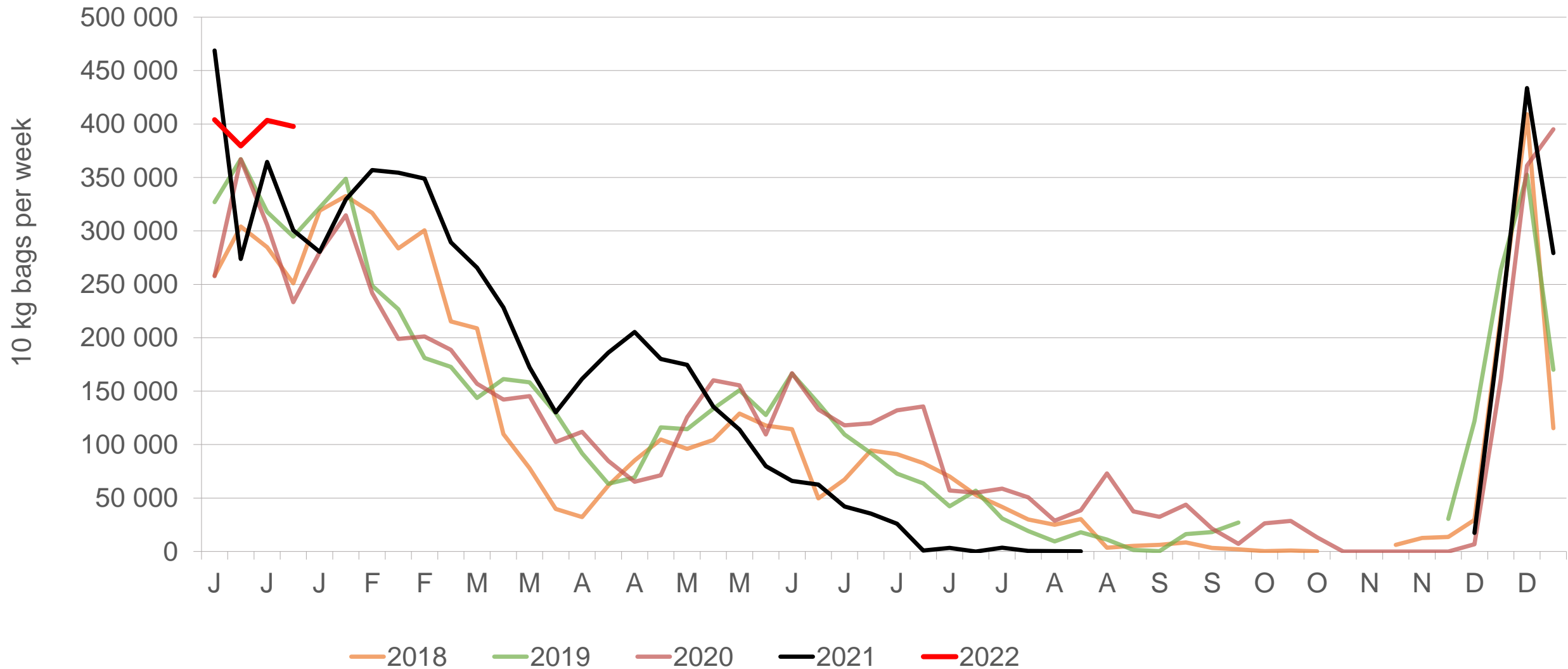


South Western Free State: Amount of 10 kg bags per week sold on FPMs



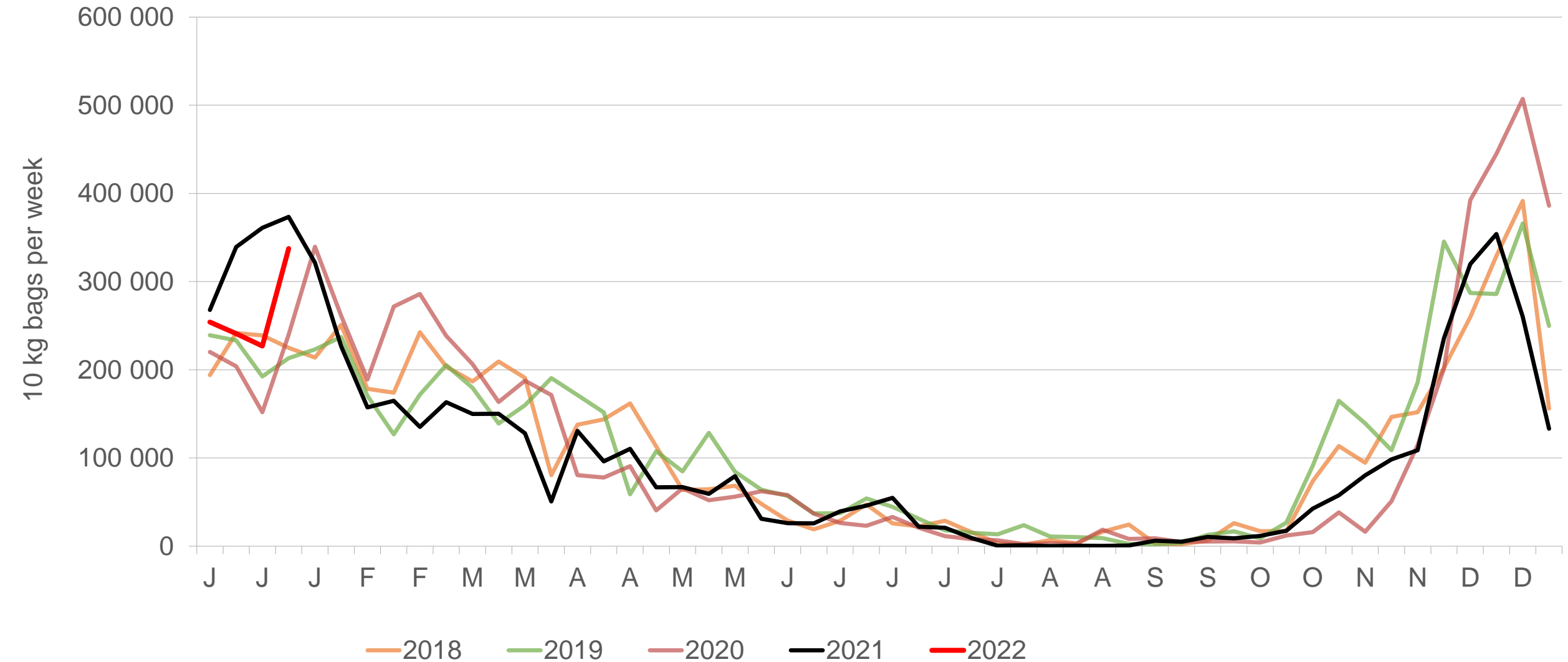
Sold 125 830 bags less than the **5-year average** of the first 4 weeks of each year.

North West: Amount of 10 kg bags per week sold on FPMs (all classes)



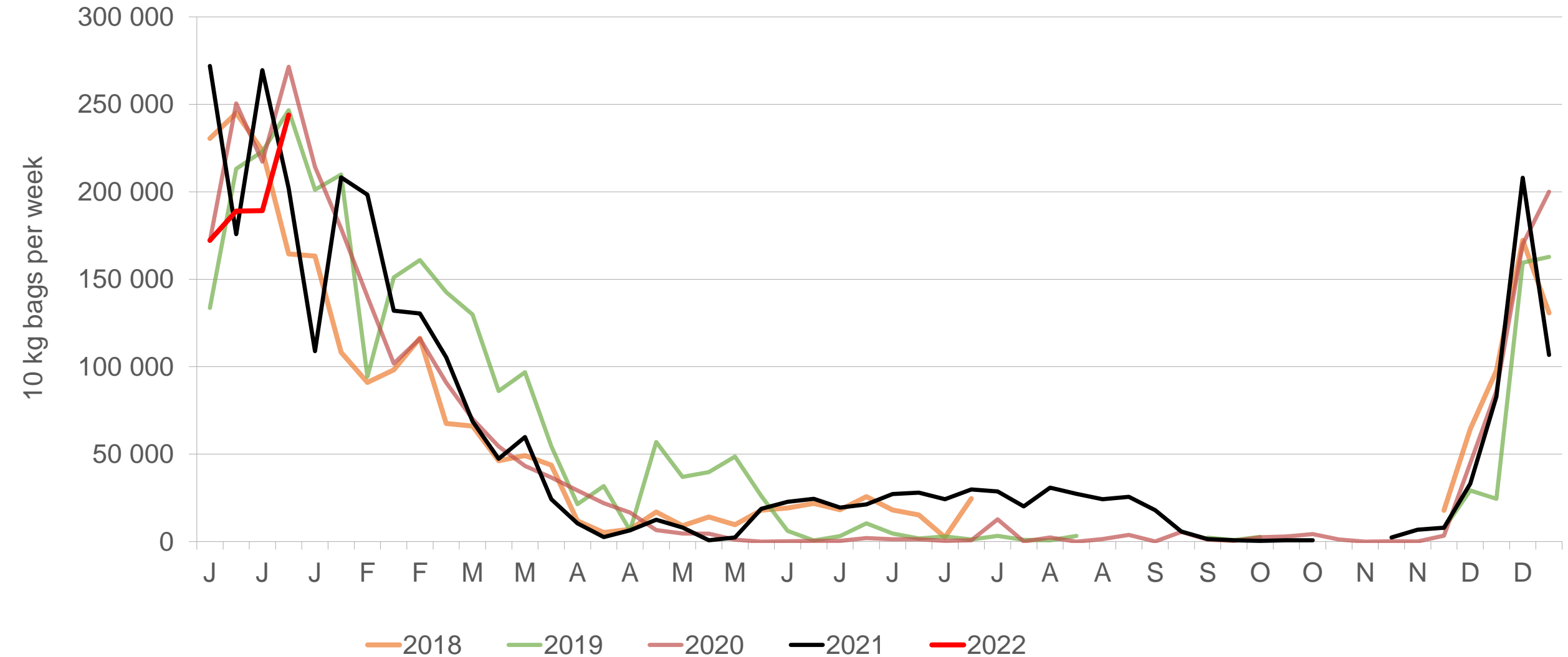
Sold 385 316 bags more than the **5-year average** of the first 4 weeks of each year.

KwaZulu-Natal: Amount of 10 kg bags per week sold on FPMs (all classes)



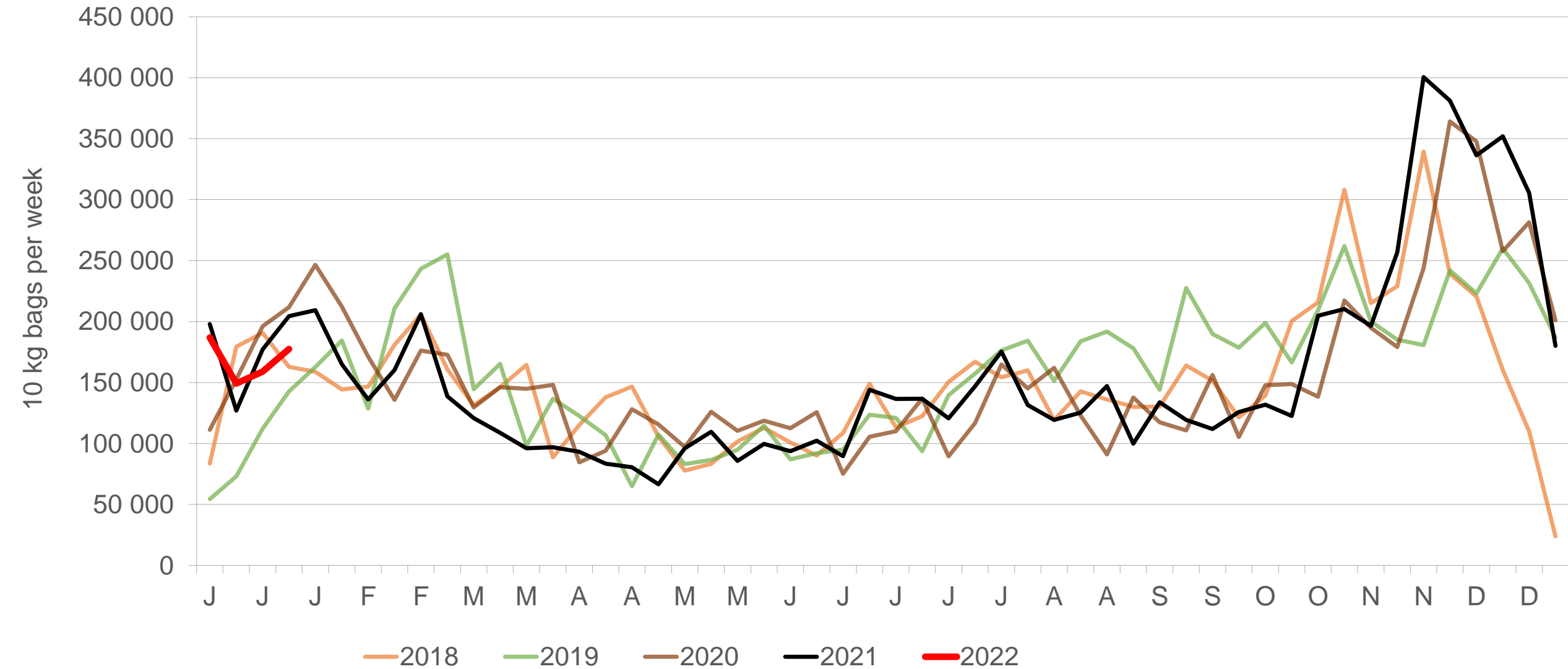
Sold 166 173 bags more than the **5-year average** of the first 4 weeks of each year.

Gauteng: Amount of 10 kg bags per week sold on FPMs (all classes)



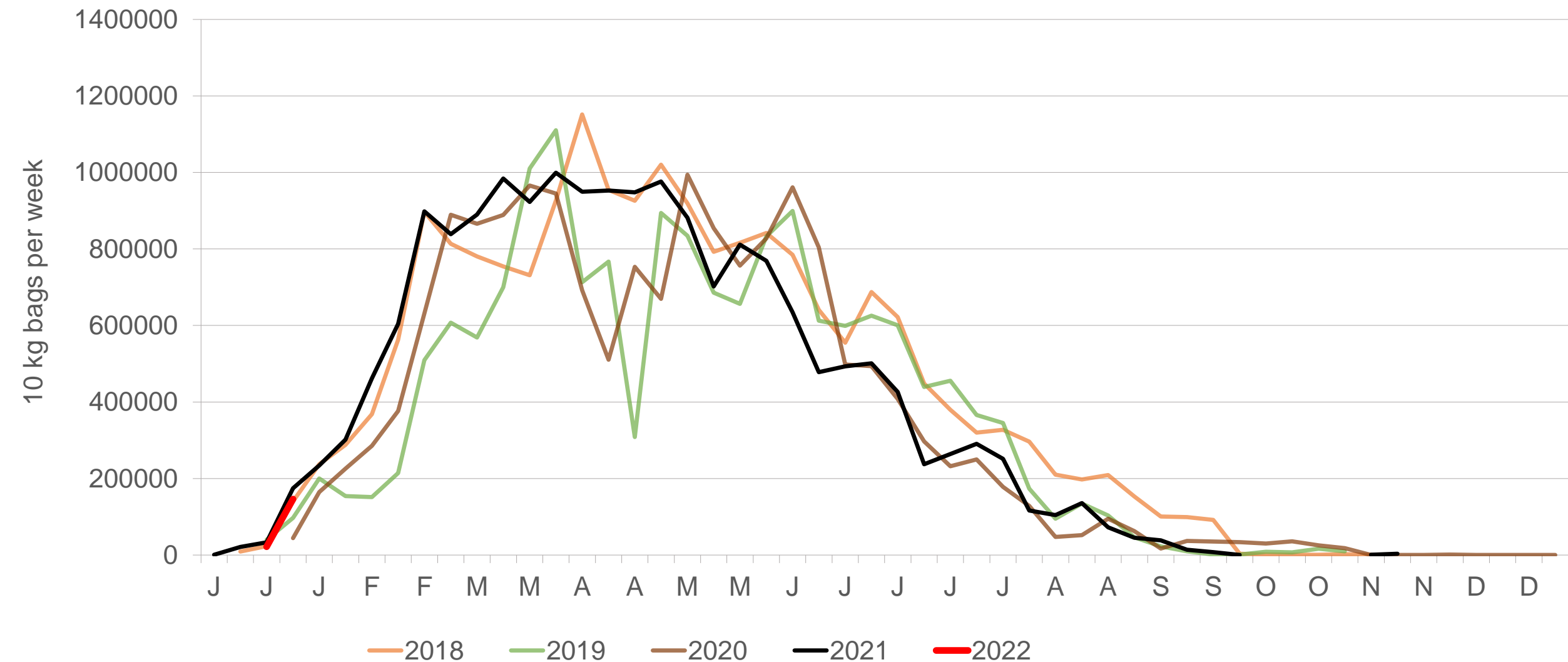
Sold 67 549 bags **less** than the **5-year average** of the first 4 weeks of each year.

Sandveld: Amount of 10 kg bags per week sold on FPMs (all classes)



Sold 105 366 bags more than the **5-year average** of the first 4 weeks of each year.

Eastern Free State: Amount of 10 kg bags per week sold on FPMs (all classes)



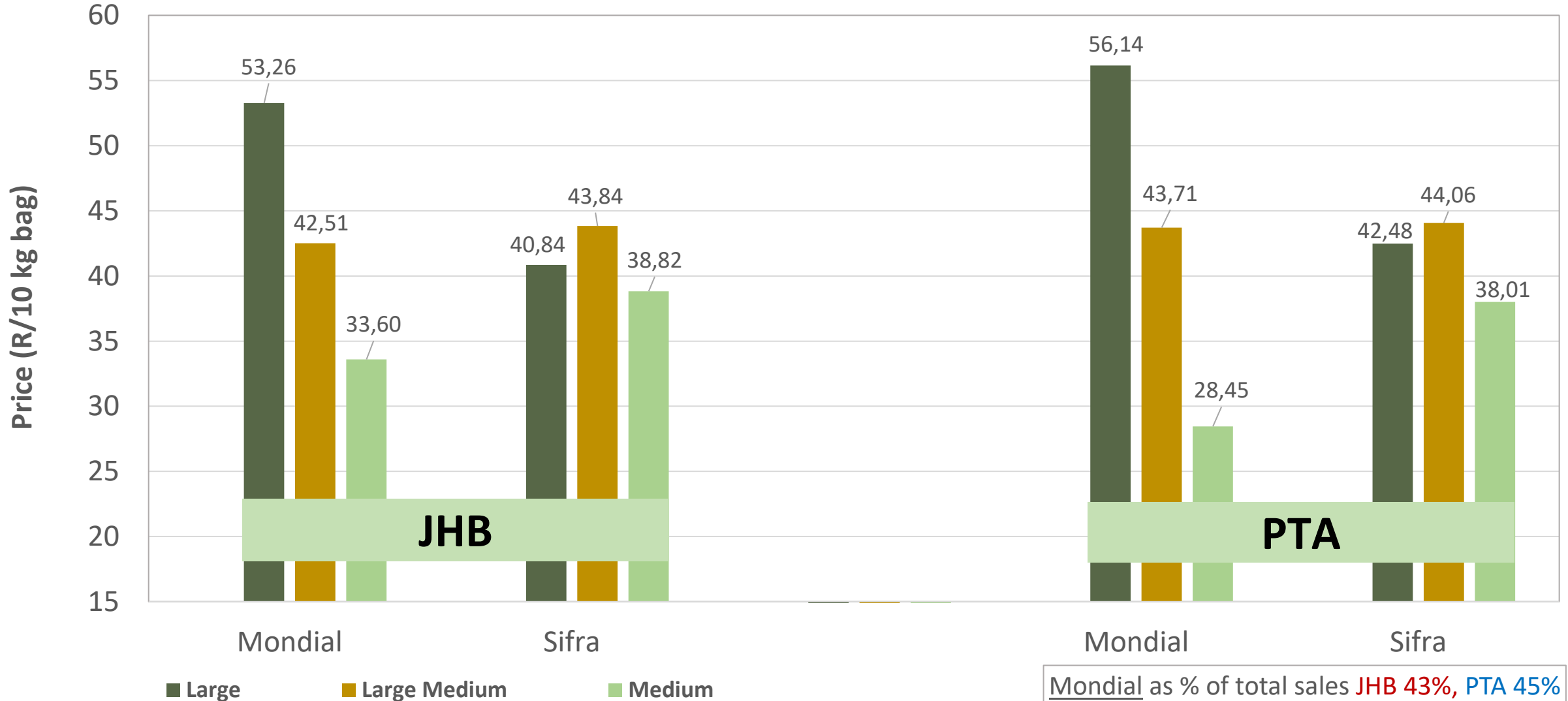
Sold 24 191 bags less than the **5-year average** of the first 4 weeks of each year.

Average weekly prices and volumes for 10 kg bags of potatoes sold on selected markets from selected production regions



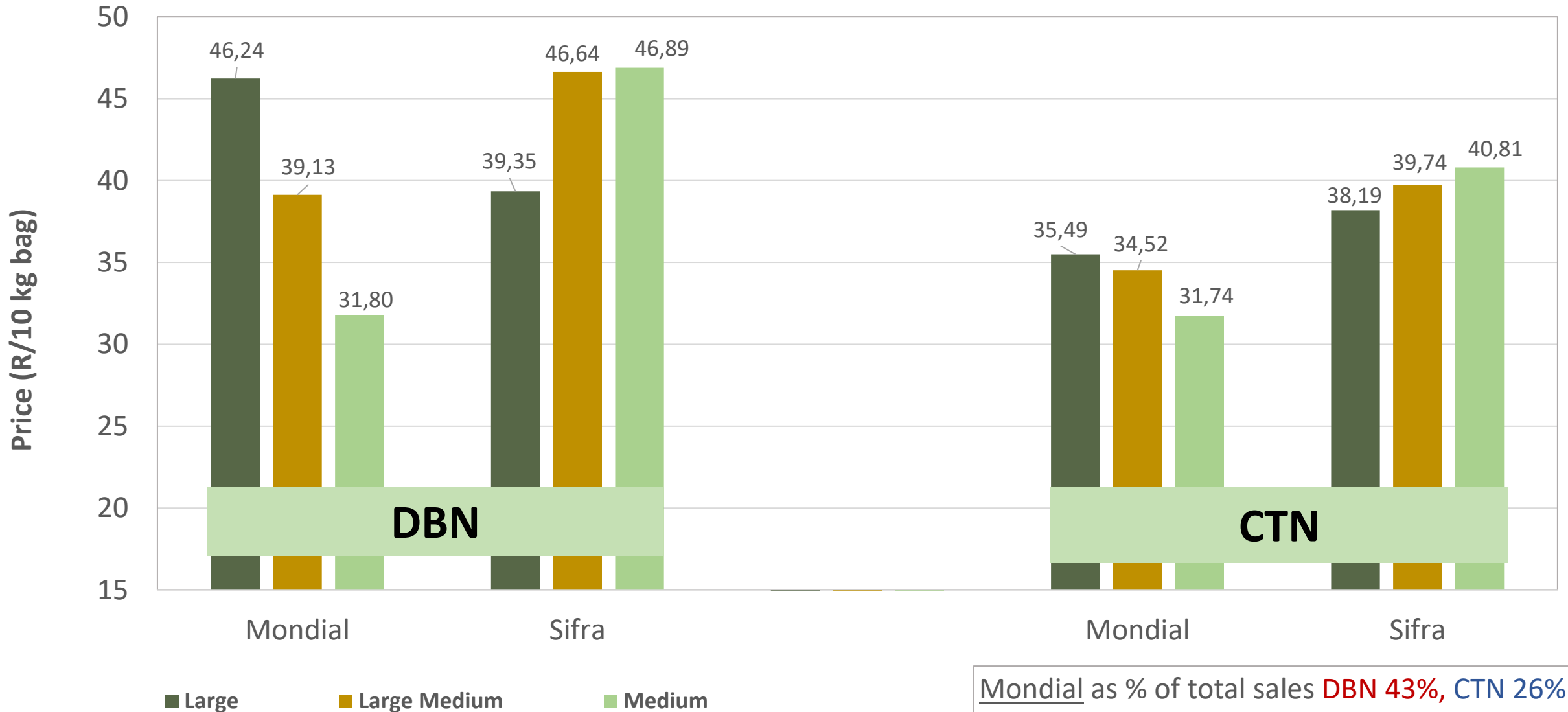
Klas & Grootte	South Western Freestate				North West				KwaZulu-Natal				Gauteng				Sandveld		Eastern Free State				All Regions	
	JOH		PRE		JOH		PRE		DUR		PIE		JOH		PRE		CAP		JOH		PRE		All Markets	
	Volume	Prices	Volume	Prices	Volume	Prices	Volume	Prices	Volume	Prices	Volume	Prices	Volume	Prices	Volume	Prices	Volume	Prices	Volume	Prices	Volume	Prices	Volume	Prices
	10kg	R/10kg	10kg	R/10kg	10kg	R/10kg	10kg	R/10kg	10kg	R/10kg	10kg	R/10kg	10kg	R/10kg	10kg	R/10kg	10kg	R/10kg	10kg	R/10kg	10kg	R/10kg	10kg	R/10kg
1L	32 584	38,51	10 366	41,48	41 864	43,86	23 353	49,32	8 133	46,11	6 161	43,92	46 643	44,61	11 962	48,44	27 120	34,92	24 340	47,30	4 634	46,57	442 319	45,39
1L/M	59 987	39,53	24 038	39,70	42 101	47,52	24 391	49,30	18 628	40,72	6 453	34,98	42 402	39,03	8 346	39,57	36 003	36,53	25 310	39,23	6 453	40,36	515 521	40,76
1M	46 060	38,54	21 303	37,12	26 979	42,44	21 163	40,89	25 376	36,71	8 480	32,85	37 125	33,97	17 252	29,92	37 801	36,02	18 285	32,86	1 739	33,19	443 440	35,80
1S	8 289	20,82	3 257	16,84	9 952	24,33	5 840	16,73	6 659	19,47	3 868	19,45	12 816	20,98	3 371	15,77	12 432	30,88	3 583	18,64	21	18,10	116 547	21,04
1S/M	16 013	28,22	7 676	25,88	19 622	33,37	9 909	29,32	2 810	27,55	1 417	22,21	5 048	24,97	1 765	25,39	1 351	26,10	1 590	24,14	409	22,17	118 827	28,30
1XL	-	-	-	-	-	-	-	-	-	-	-	-	-	-	-	-	-	-	-	-	-	-	-	-
1XS	6 340	17,67	-	-	4 659	23,88	-	-	-	-	-	-	3 208	9,92	-	-	-	-	330	6,67	-	-	15 642	16,94
1XXS	-	-	-	-	-	-	-	-	-	-	-	-	-	-	-	-	-	-	-	-	-	-	-	-
2L	2 341	37,63	3 205	39,24	7 922	33,68	5 275	40,08	3 254	37,75	1 180	39,36	2 185	39,96	510	35,02	9 494	29,05	1 471	40,15	1 306	48,34	99 203	38,93
2L/M	2 834	34,43	5 560	37,81	91	28,55	3 618	38,56	5 707	34,18	4 338	28,95	3 897	29,09	655	35,16	15 528	27,46	2 240	36,30	1 835	35,87	99 622	32,04
2M	817	31,59	2 979	33,87	7 338	29,01	2 489	32,99	8 704	29,74	2 020	26,62	5 992	24,89	606	24,07	13 838	26,67	1 995	25,82	703	28,26	102 414	27,00
2S	309	25,76	273	18,00	-	-	570	12,04	4 127	10,02	1 039	19,68	1 365	12,02	307	14,02	3 920	21,97	-	-	19	11,47	21 351	16,67
2S/M	265	21,02	563	19,75	550	22,40	453	33,13	-	-	-	-	-	-	-	-	2 114	16,54	110	25,00	-	-	17 772	20,18
2XL	-	-	-	-	-	-	-	-	-	-	-	-	-	-	-	-	-	-	-	-	-	-	-	-
2XS	-	-	-	-	-	-	-	-	-	-	-	-	-	-	-	-	-	-	110	10,00	-	-	172	8,25
2XXS	-	-	-	-	-	-	-	-	-	-	-	-	-	-	-	-	-	-	-	-	-	-	-	-
3L	2 345	25,10	2 057	26,83	440	26,00	1 225	34,45	1 512	31,10	276	34,57	1 043	20,93	1 163	15,27	498	18,80	1 926	23,27	890	40,78	31 294	26,33
3L/M	1 051	23,94	307	24,86	1 936	30,81	2 034	28,08	600	16,00	-	-	1 015	22,69	-	-	100	25,00	-	-	1 190	36,70	19 560	26,42
3M	8 220	18,45	4 467	17,42	3 614	17,69	3 038	17,27	1 669	18,73	704	24,43	3 808	15,11	160	15,86	2 543	16,60	955	14,62	263	20,92	60 870	18,69
3S/M	-	-	-	-	770	20,00	692	17,88	-	-	-	-	-	-	113	5,00	48	18,00	-	-	-	-	4 278	16,72
3XS	-	-	-	-	-	-	-	-	-	-	-	-	-	-	-	-	-	-	-	-	-	-	-	-
3XXS	-	-	-	-	-	-	-	-	-	-	-	-	-	-	-	-	-	-	-	-	-	-	-	-
4L	-	-	-	-	-	-	-	-	-	-	-	-	-	-	-	-	-	-	-	-	-	-	136	27,13
4L/M	-	-	-	-	-	-	-	-	-	-	-	-	-	-	-	-	111	22,81	-	-	-	-	1 000	13,17
4M	-	-	-	-	-	-	995	10,69	423	17,09	209	13,39	-	-	661	5,87	104	21,42	-	-	-	-	4 051	10,14
4S	-	-	-	-	-	-	-	-	-	-	-	-	-	-	141	3,13	-	-	-	-	-	-	456	4,42
4S/M	-	-	-	-	-	-	-	-	-	-	-	-	-	-	160	6,25	-	-	-	-	-	-	453	11,94
Total	187 455	35,20	87 665	34,72	167 838	39,53	107 076	39,99	89 659	33,50	39 670	29,74	166 547	35,38	47 981	33,68	168 766	32,07	82 245	37,78	19 517	39,88	2 141 814	35,75

PTA & JHB markets: Average Prices - Different Sizes (only 10 kg bags)



Mondial as % of total sales JHB 43%, PTA 45%
 Sifra as % of total sales JHB 48%, PTA 42%


DBN & CTN markets: Average Prices - Different Sizes (only 10 kg bags)





Mondial as % of total sales **DBN 43%**, **CTN 26%**
 Sifra as % of total sales **DBN 44%**, **CTN 43%**


Thank you for your time

Feel free to contact us on:

 jano@potatoes.co.za
fpcoetzee@potatoes.co.za

 +27 (0)12 349 1906

 6 De Havilland Crescent
Persequor Techno Park
Persequor Park
Pretoria

 www.potatoes.co.za



Potatoes
Aartappels SA